



Doors for inclined lifts

2000 SWS

Automatic Lift Door

ENG

2000 SWS



APPLICATIONS		DESTINATION					
		PASSENGERS		GOODS		SPECIAL USES	
		DOORS	CARS	DOORS	CARS	DOORS	CARS
HOMELIFT		2000 T	ADAPTA VARIO				
RESIDENTIAL		2000 B 2000 C 2000 B-HR LOW	ADAPTA	2000 B-G	CARGO	2000 SWS	CUSTOM
OFFICES		2000 B 2000 C 2000 B-HR LOW	ADAPTA	2000 B-G	CARGO	2000 SWS 2000 R	CUSTOM PANOR./ CUSTOM
HIGH RISE		2000 B-HR MED 2000 B-HR TOP	VARIO	2000 B-G	CARGO	2000 HD	CARGO
HOSPITALS		2000 B 2000 B-HR LOW	VARIO	2000 B-G	ADAPTA	2000 B-G	ADAPTA
TRANSPORT		2000 B 2000 B-HR LOW	ADAPTA	2000 HD 2000 B-G	CARGO	2000 SWS	CUSTOM
MODERNIZATION		2000 T 2000 C-MOD	EASY ADAPTA	2000 B-G	CARGO	2000 HD	CARGO
HOTELS		2000 B 2000 B-HR LOW	VARIO	2000 B-G	ADAPTA	2000 R	PANORAMIC CUSTOM
SHOPPING CENTERS		2000 B 2000 B-HR LOW	ADAPTA	2000 B-G	ADAPTA	2000 HD 2000 R	CARGO PANOR./ CUSTOM
INDUSTRIAL				2000 B-G	CARGO	2000 HD	CUSTOM CARGO



Optical coupling; mechanical coupling free

Suitable for inclination between 15 and 75 degrees

Different floor to floor inclination for complex projects

Framed and frameless glass panels for top design projects

Under driven operator for higher aesthetic appeal

Increased protection against extreme weather conditions

Fire rated executions

Heated bottom track for extreme weather conditions

The first ever certified automatic door with optical coupling

These door systems, based on optical coupling, are the right solution for all those situations in which mechanical coupling is not possible.

Both the car and the landing door feature linear belt traction operators, each with its own engine. They couple through an optical device, integrated into the engine SWS controller, allowing a misalignment up to 50 mm between the centers of the emitter and the detector. Being prEN 81-22 certified,

SWS is ideal for inclined lifts; inclinations between 15° and 75° are allowed and, for complex installations, it's even possible to have different inclinations from floor to floor.

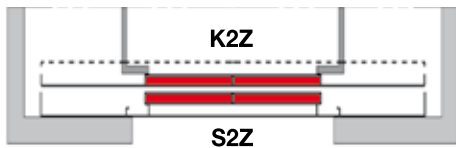
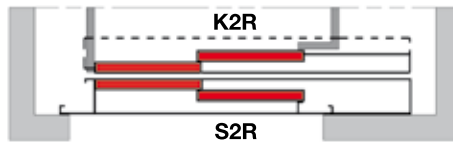
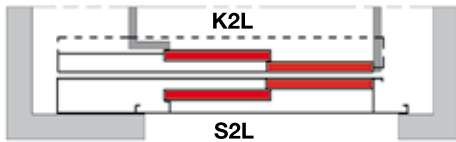
A fully covered operator guarantees high IP ratings and protection degrees even in extreme weather conditions. A wide range of finishes, fire certifications and special solutions are available.

PRODUCT RANGE

Model	TB min-max (mm)	TH min-max (mm)
K-S 2R/L	800 - 1200	2000 - 2200
K-S 2Z	800 - 1200	2000 - 2200

For further information see our technical catalogues

DOOR OPENING TYPE



FIRE RATED EXECUTIONS - EN 81-58

Model	Steel doors	Framed glass doors
S 2R/L	E 120 EW 60	E 120
S 2Z	EI 60 EI 120	

BS 476, GOST and many other certifications available. Call for information.

CABINS SUGGESTED FOR THIS DOOR

> CUSTOM

STANDARD MOTORIZATION

Belt-driven operator with 24 Vdc optical encoder controller motor, SWS© DC-PWM technology with integrated switching transformer

- Power supply voltage: 90-290 Vac (115 V -20%, 230 V + 26%), 50-60 Hz with integrated switching.
- Power rated 200 VA.
- Emergency power supply 24Vdc
- Operating temperature range -10°C to +60°C
- Operating humidity range: 20% to 80% non condensing
- On-board obstacle detection (door re-opening) feature
- Separately adjustable opening and closing speed
- Integrated self-learning cycle and automated speed profiles setting

DOOR AND FRAME FINISHES

STANDARD

OPTIONS

DOOR AND FRAME FINISHES	STANDARD	OPTIONS
RAL 7032 powder coating	✓	✗
Other RAL Colours	✗	✓
Framed glass panels	✗	✓
Stainless-steel claddings	✗	✓
Skinplate claddings	✗	✓

BOTTOM TRACK

STANDARD

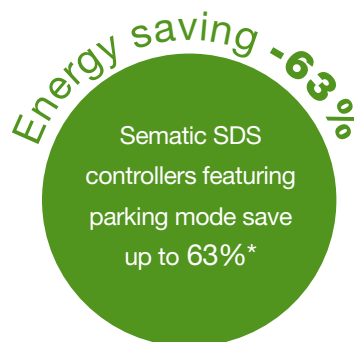
OPTIONS

BOTTOM TRACK	STANDARD	OPTIONS
Aluminum	✓	✗
Steel	✗	✓
Stainless-steel	✗	AISI 304 / AISI 316
Brass, Bronze	✗	✓

SEMATIC FOR ENERGY SAVING

At Sematic, we take our energy use seriously. We have developed a set of technological devices that allow our elevator components to use as little energy as possible, such as our **Sematic SDS door controller**.

* Door power consumption difference between normal standby mode and parking mode measured in laboratory



EN-81

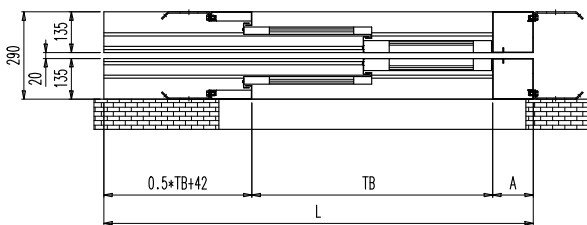
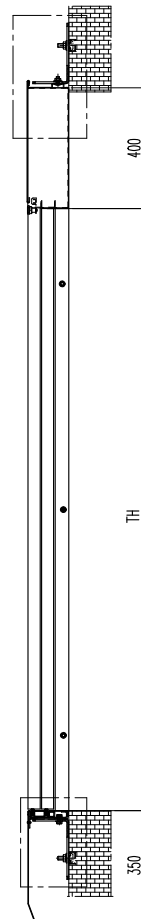
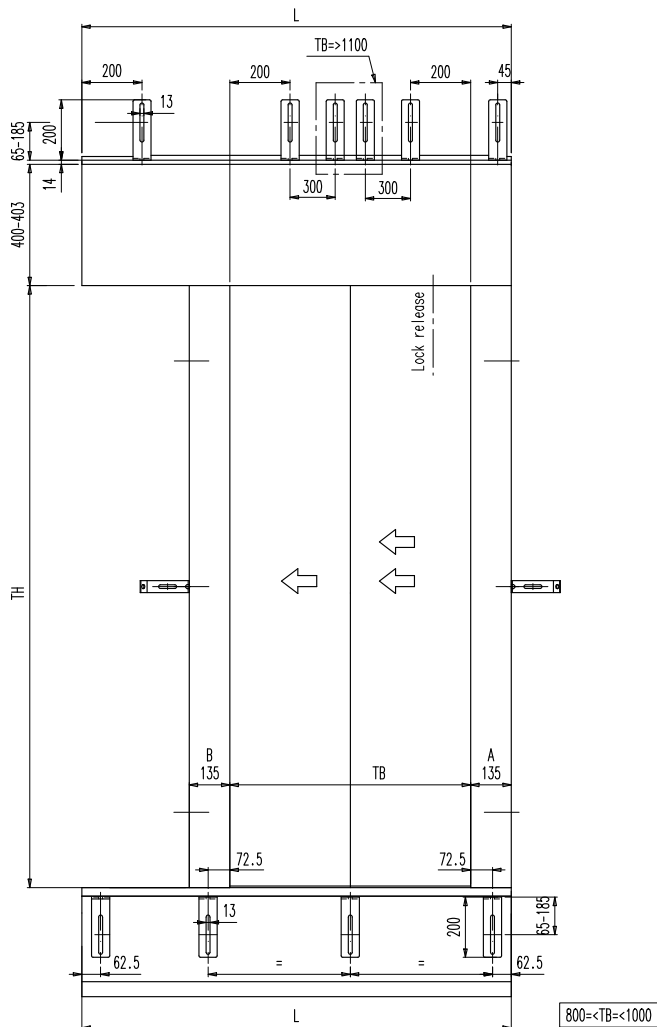
MAIN FEATURES	STANDARD	OPTIONS
Mechanical coupling free	✓	✗
Security door lock	✓	✗
Sill to sill distance	10 mm minimum	✗
Door panels	Single skin	Double skin
Long life guide shoes	✓	✗
Impact resistant packaging	Cardboard box- ISPM15	✗
Cladding	✗	Front/rear
Upper tracks	✗	Steel / aluminum
Under-driven operator	✗	✓
Heated bottom track	✗	✓
Smoke-seal/Air-seal execution	✗	✓
Anti-vandal execution	✗	EN 81-71
Hidden bottom track	✗	✓
Water-resistant contacts	✗	IP 54, IP 65
Landing door lock release key	✓	✗
Rollers	✗	Larger diameters



2Z execution shown
in the picture



2L LAYOUT: FRONT, SIDE VIEWS AND COUPLING

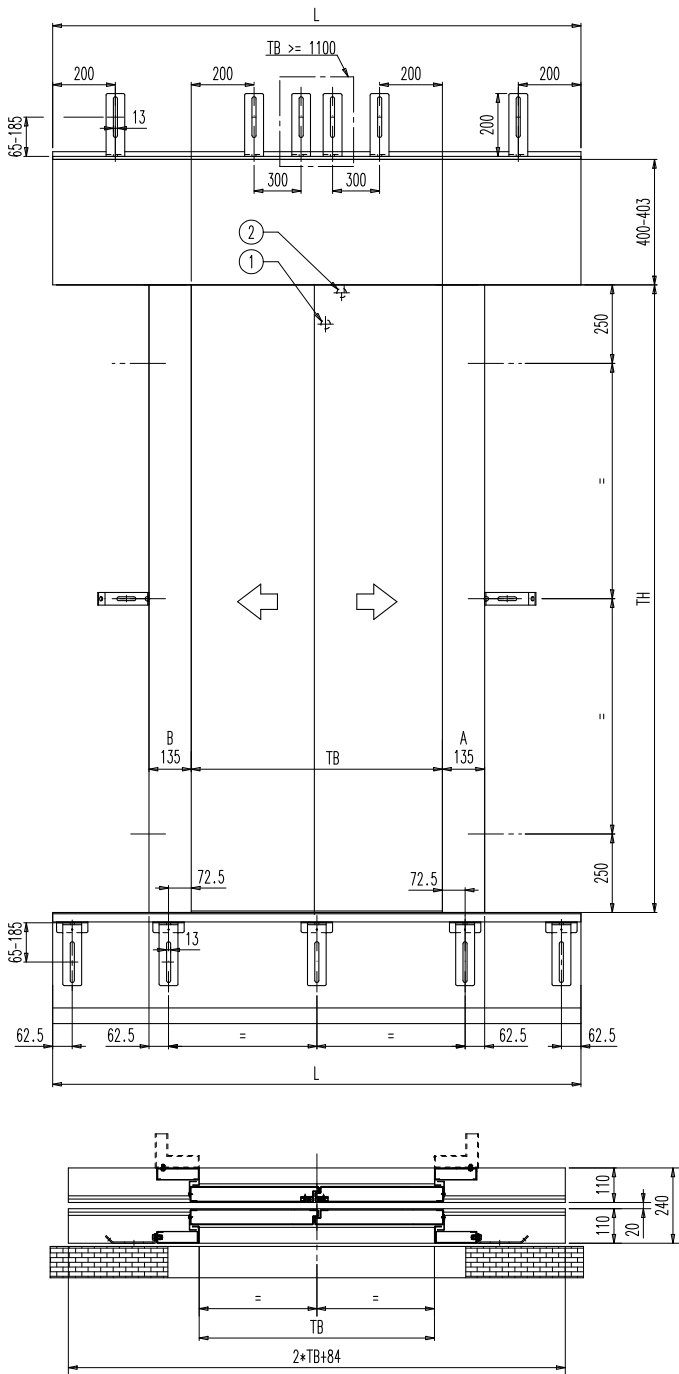


TB	CLEAR WIDTH	
TH	CLEAR HEIGHT	
A	SLAM POST DIMENSION	(IF 135 DIFFERENT CUSTOM EXECUTION)
B	SIDE POST DIMENSION	
L	1.5*TB+177 1.5*TB+177+(A-135)	STANDARD EXECUTION (A=135) PORTAL (CUSTOM EXECUTION)

NOTES

- 2L as drawing, 2R mirrored
- For further information see our technical catalogues

2Z LAYOUT: FRONT, SIDE VIEWS AND COUPLING



1	LOCK RELEASE (ACCESSIBLE FROM FLOOR)
2	LOCK RELEASE (ACCESSIBLE FROM SHAFT)

TB	CLEAR WIDTH	
TH	CLEAR HEIGHT	
A	SLAM POST DIMENSION	(IF 135 DIFFERENT CUSTOM EXECUTION)
B	SIDE POST DIMENSION	
WH	105mm STANDARD (NOT available with Hidden bottom track) 145mm STANDARD (ONLY for hidden bottom track) CUSTOM	
L	$2 \cdot TB + 84$	

NOTES

- For further information see our technical catalogues



Italy

Sematic Spa - Group Headquarters

Via Zappa Comm. Francesco, 5
24046 Osio Sotto, Bergamo
Tel. +39 035 48 15 100 - Fax +39 035 48 15 199
e-mail info@semaic.com

Sematic Spa- Suisio Plant

Via dei Piazzoli, 1/5
24040 Suisio, Bergamo
Tel. +39 035 49 36 111 - Fax. +39 035 90 24 51
e-mail info@semaic.com

United Kingdom

Sematic UK Ltd

Meadow Gate, Valley Park Est.
Wombwell, Barnsley, South Yorkshire S73 0UN
Tel. +44 1226 344 800 - Fax. +44 1226 344 811
e-mail info@uk.semaic.com

Turkey

Sematic Asansör San.ve Tic.Ltd.Sti.

Necip Fazıl Bulvarı Keyap Çarşı Sitesi F2 Blok No.99
Yukarıdudullu / Ümraniye, 34775 İstanbul
Tel. +90 216 508 1470 (PBX) - Fax +90 216 508 1473
e-mail info@tr.semaic.com

Hungary

Sematic Hungária Kft

Debreceni út 273
4400 Nyiregyháza
Tel. +36 42 548 410 - Fax +36 42 548 419
e-mail info@hu.semaic.com

Singapore

Sematic Singapore Pte Ltd

8 Burn Road, 1301 Trivex
369977 Singapore
e-mail info@sg.semaic.com

China

Sematic Elevator Products (Suzhou) Co., Ltd

215121, No. 52 Weixi Road, Weiting Science Park
Suzhou Industrial Park
Tel. +86 512 8717 1819 - Fax +86 512 8717 1820
e-mail info@cn.semaic.com

Sematic Elevator Products (Changshu) Co.,Ltd.

215558, No 18 Jinmen Road Changshu Southeast
Economic Development Zone of Jiangsu
Tel. + 86 512 8717 1819 - Fax +86 512 8717 1820
e-mail info@cn.semaic.com

Sematic (Hong Kong) Ltd

Unit 1807, Mindas Plaza, No. 1 Tai Yau Street,
San Po Kong, Kowloon, Hong Kong
Tel. +852 219 47 166 - Fax +852 219 47 322
e-mail info@hk.semaic.com

India

Sematic RE Elevator Products (India) Pvt. Ltd

Madhuban, F-Wing, 1st Floor, W.E. Highway, Near Dahisar
Telephone Exchange, Dahisar (E), Mumbai 400068
Tel. +91 022 2897 2184 / 3184 - Fax +91 022 2897 8643
e-mail info@in.semaic.com

Mexico

Sematic Elevadores Mexico S. de R.L. de C.V.

Bldv Revolucion Mexicana n°1001 Col Barrera,
Monclova, Coahuila 25770
Tel. +52 (866) 648 3365 / 66 / 67 - Fax (ext 160)
e-mail info@tyler.semaic.com

USA

Tyler Elevator Products Div. of Sematic USA Inc.

7852, Bavaria Road
Twinsburg, Ohio 44087
Tel. +1 216 524 0100 - Fax. +1 216 524 9710
e-mail info@tyler.semaic.com

www.semaic.com