



Doors for high-rise elevators

2000 B-HR

2000 B-HR

Automatic Lift Door

ENG

MED
TOP



LOW



APPLICATIONS		DESTINATION					
		PASSENGERS		GOODS		SPECIAL USES	
		DOORS	CARS	DOORS	CARS	DOORS	CARS
HOMELIFT		2000 T	ADAPTA VARIO				
RESIDENTIAL		2000 B 2000 C 2000 B-HR LOW	ADAPTA	2000 B-G	CARGO	2000 SWS	CUSTOM
OFFICES		2000 B 2000 C 2000 B-HR LOW	ADAPTA	2000 B-G	CARGO	2000 SWS 2000 R	CUSTOM PANOR./ CUSTOM
HIGH RISE		2000 B-HR MED 2000 B-HR TOP	VARIO	2000 B-G	CARGO	2000 HD	CARGO
HOSPITALS		2000 B 2000 B-HR LOW	VARIO	2000 B-G	ADAPTA	2000 B-G	ADAPTA
TRANSPORT		2000 B 2000 B-HR LOW	ADAPTA	2000 HD 2000 B-G	CARGO	2000 SWS	CUSTOM
MODERNIZATION		2000 T 2000 C-MOD	EASY ADAPTA	2000 B-G	CARGO	2000 HD	CARGO
HOTELS		2000 B 2000 B-HR LOW	VARIO	2000 B-G	ADAPTA	2000 R	PANORAMIC CUSTOM
SHOPPING CENTERS		2000 B 2000 B-HR LOW	ADAPTA	2000 B-G	ADAPTA	2000 HD 2000 R	CARGO PANOR./ CUSTOM
INDUSTRIAL				2000 B-G	CARGO	2000 HD	CUSTOM CARGO



Aiming higher and higher as fast, safely and comfortably as possible

Sematic 2000 B-HR is the ideal solution for passenger movement within all high-rise buildings, as it includes: fast, quiet and smooth door opening and closing (allowing for efficient traffic management flow), exceptional robustness, excellent transport comfort, unrivalled aesthetic properties and all in full compliance with the most stringent safety regulations.

All of its components and technical solutions have been

analyzed and endurance tested in our laboratories across millions of cycles, ensuring that this door guarantees constant high performance over a long life.

A wide range of finishes, options and certifications are available too. For all these reasons, Sematic 2000 B-HR has been selected by companies, architects, and consultants for installation in some of the world's most prestigious buildings.

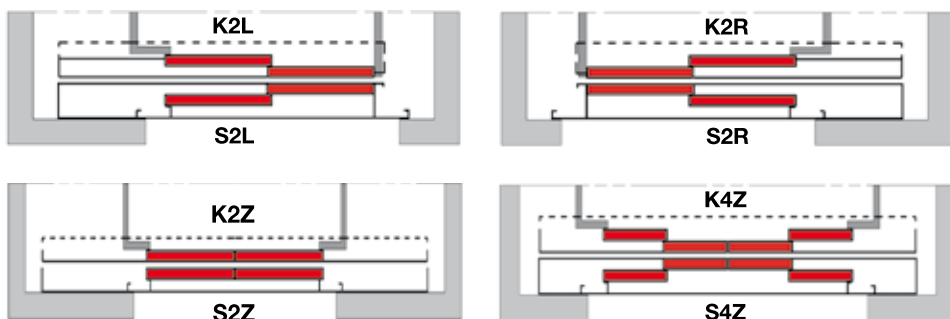
All the information and pictures are related to MED and TOP configurations. For HR-LOW see our technical catalogues.

PRODUCT RANGE			BOTTOM TRACK PACK OVERALL DIMENSION (mm)			
Model	TB min-max (mm)	TH min-max (mm)	Opening	K (car)	S (landing)	Pack ⁽¹⁾
K-S 2R/L	800 - 1400	2000 - 2500	2R/L	120	120	265
K-S 2Z	800 - 1400	2000 - 2800	2Z	85	90	200
K-S 4Z	1300 - 1800	2000 - 2400	4Z	120	120	265

For further information see our technical catalogues

⁽¹⁾ 25mm bottom track distance

DOOR OPENING TYPE



FIRE RATED EXECUTIONS - EN 81-58

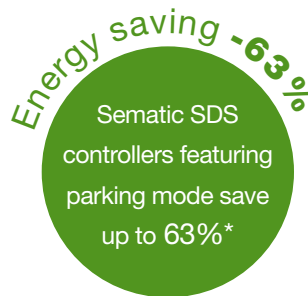
Model	Steel doors	Framed glass doors
S 2R/L	E 120 EW 60 EI 60 EI 120	E 120
S 2Z		
S 4Z		

BS 476, GOST and many other certifications available. Call for information.

SEMATIC FOR ENERGY SAVING

At Sematic, we take our energy use seriously. We have developed a set of technological devices that allow our elevator components to use as little energy as possible, such as our **Sematic SDS door controller**.

* Door power consumption difference between normal standby mode and parking mode measured in laboratory



CABINS SUGGESTED FOR THIS DOOR

> VARIO

All the information and pictures are related to MED and TOP configurations. For HR-LOW see our technical catalogues.

VERSION	LOW	MED	TOP
Typical application	Residential Mid-rise and High-rise	Mid-rise offices	High-traffic flow offices
Elevator speed	< 4m/s	4-6m/s	> 6m/s
Door drive controller	SDS	SDS MV	SDS HV
Motor control	DC PWM Standard	Vector control	Vector control
Skate type	Std expansion skate	HR expansion skate	HR expansion skate
Main supply	90-230 Vac 50-60Hz Single phase	230 Vac 50-60Hz Single/Three-phase	230/400 Vac 50-60Hz Single/Three-phase*
Motor type	24 Vdc	Brushless 5A	Brushless 8A
Max moving mass	300 kg	320 kg	> 320 kg
Active clutch	-	Optional	Standard
Backup battery	-	Standard	Standard
UPS supercaps	-	Optional	Optional
KPC closing panel contact	-	Standard	Standard

(*) depending on the application

STANDARD MOTORIZATION

Belt-driven operator with 230/430 Vac Brushless Motor with optical Encoder controlled by an electronic card with microprocessor (SDS© - AC-VVVF HV-MV Technology)

- Power supply voltage: 230/430 Vac single phase or three phase
- Installed power: 1300 VA
- Operating temperature range: from -10°C to +60°C
- Operating humidity range: from 20% to 80% non-condensing
- On-board obstacle detection (door re-opening) feature
- Separately adjustable opening and closing speed
- Integrated self-learning cycle and automated speed profiles setting
- Self-learning cycle at the first installation in order to acknowledge door dimension and form opening and closing curves
- Double TB opening management

DOOR AND FRAME FINISHES

STANDARD

OPTIONS

RAL 9005	✓	✗
Other RAL Colours	✗	✓
Framed glass panels	✗	✓
Stainless steel claddings	✗	✓

BOTTOM TRACK

STANDARD

OPTIONS

Aluminum	✓	✗
Steel	✗	✓
Stainless-steel	✗	AISI 304 / AISI 316

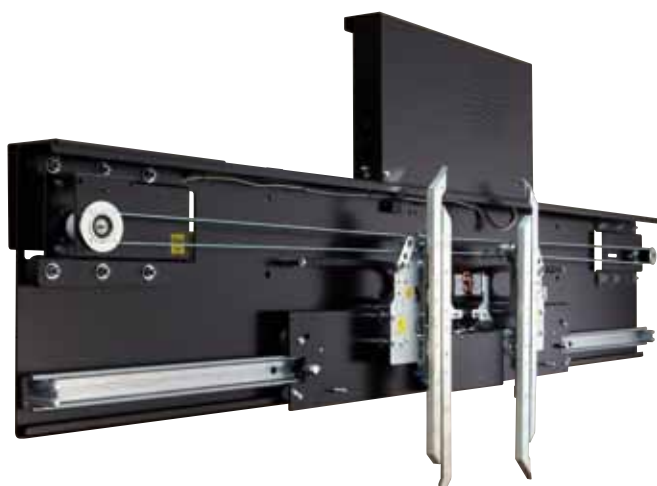
All the information and pictures are related to MED and TOP configurations. For HR-LOW see our technical catalogues.




2Z TOP execution shown in the picture

MAIN FEATURES	STANDARD	OPTIONS
Door closing	Counterweight (Top version - European Market) Spirator (Top version - AP Market) Spirator (Med version)	Counterweight (Med version)
Door panels	Single skin	Double skin
Door apron	Galvanized	x
Seaworthy packing	✓	x
Top tracks	Steel	x
Mechanism cover plate	x	✓
Boxed Frame 100	✓	x
Boxed Frame 50	x	✓
Angle frame	x	✓
Basic frame	x	✓
Switch cover	IP-21	x
Air-seal construction	x	✓
Hidden bottom track	x	✓
Grout guard	x	✓
Adjustable brackets for top and bottom fixing	Tolerance 0-60 mm	x
Pre-wiring	x	✓
Lock roller	High performance	x
Carriage	Increased, reinforced, high performance, low noise	x

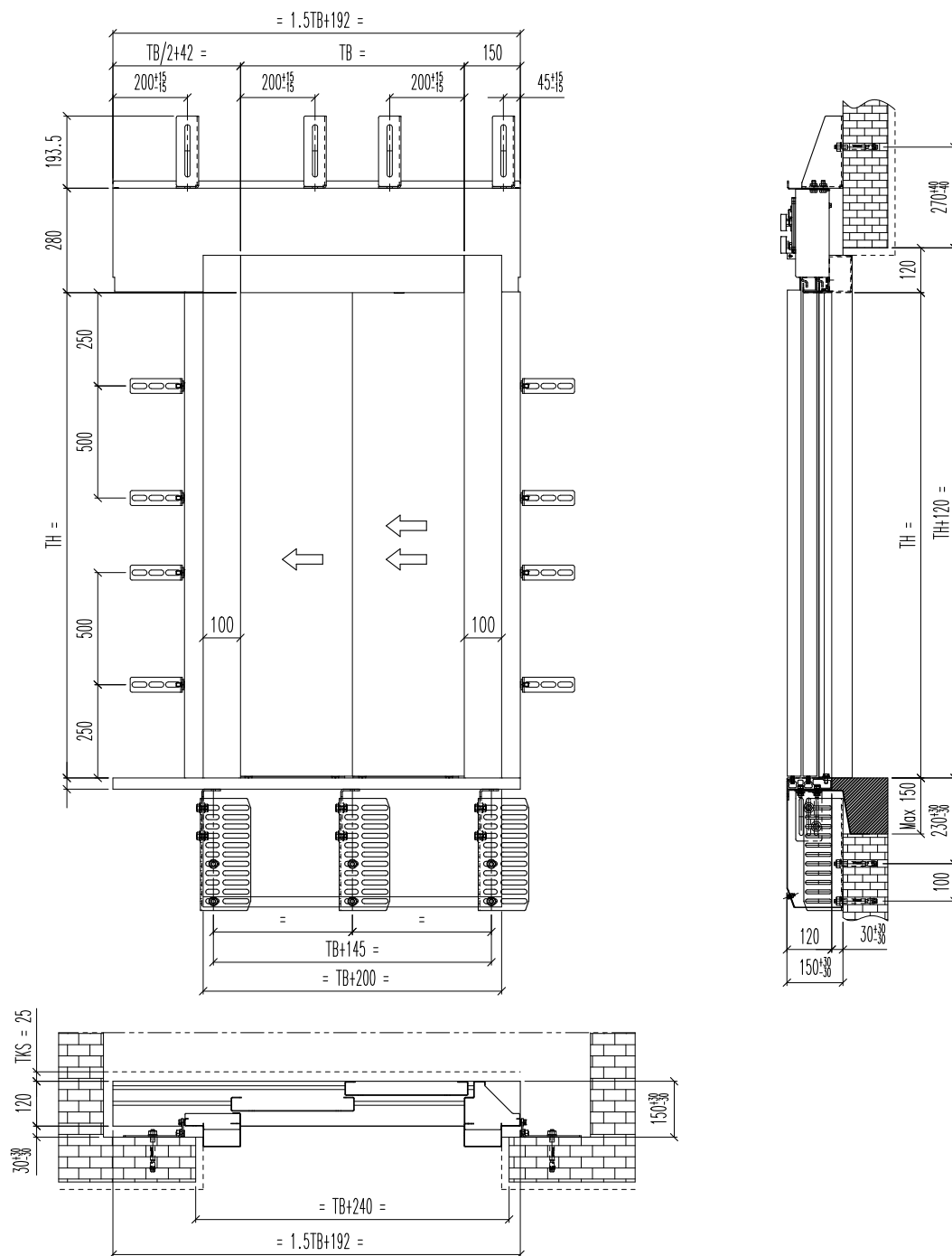
All the information and pictures are related to MED and TOP configurations. For HR-LOW see our technical catalogues.



2Z TOP execution
shown in the picture

MAIN FEATURES	STANDARD	OPTIONS
Expansion skate HR	✓	✗
Motorization	See pag. 73	✗
Door controller	SDS AC-VVVF Brushless HV-MV	✗
Door panels	Double skin (Top) - Single skin (Med)	Single skin
Door apron	✗	✓
Locking device	EN81-1/2	✗
Seaworthy packing	✓	✗
Evacuation rope	✓	✗
Detector	✗	Dynamic
UPS supercaps	✗	✓
Retractable Safety Edge	✗	✓
Rollers	Increased, reinforced, high performance, low noise	✗
Car Front Sealing (CFS)	✗	✓
Traction belt	Reinforced, low noise	✗
Active clutch	✓	✗
Increased tension pulley	✓	✗
Landing door lock release key	✓	✗
Top tracks	Steel	✗

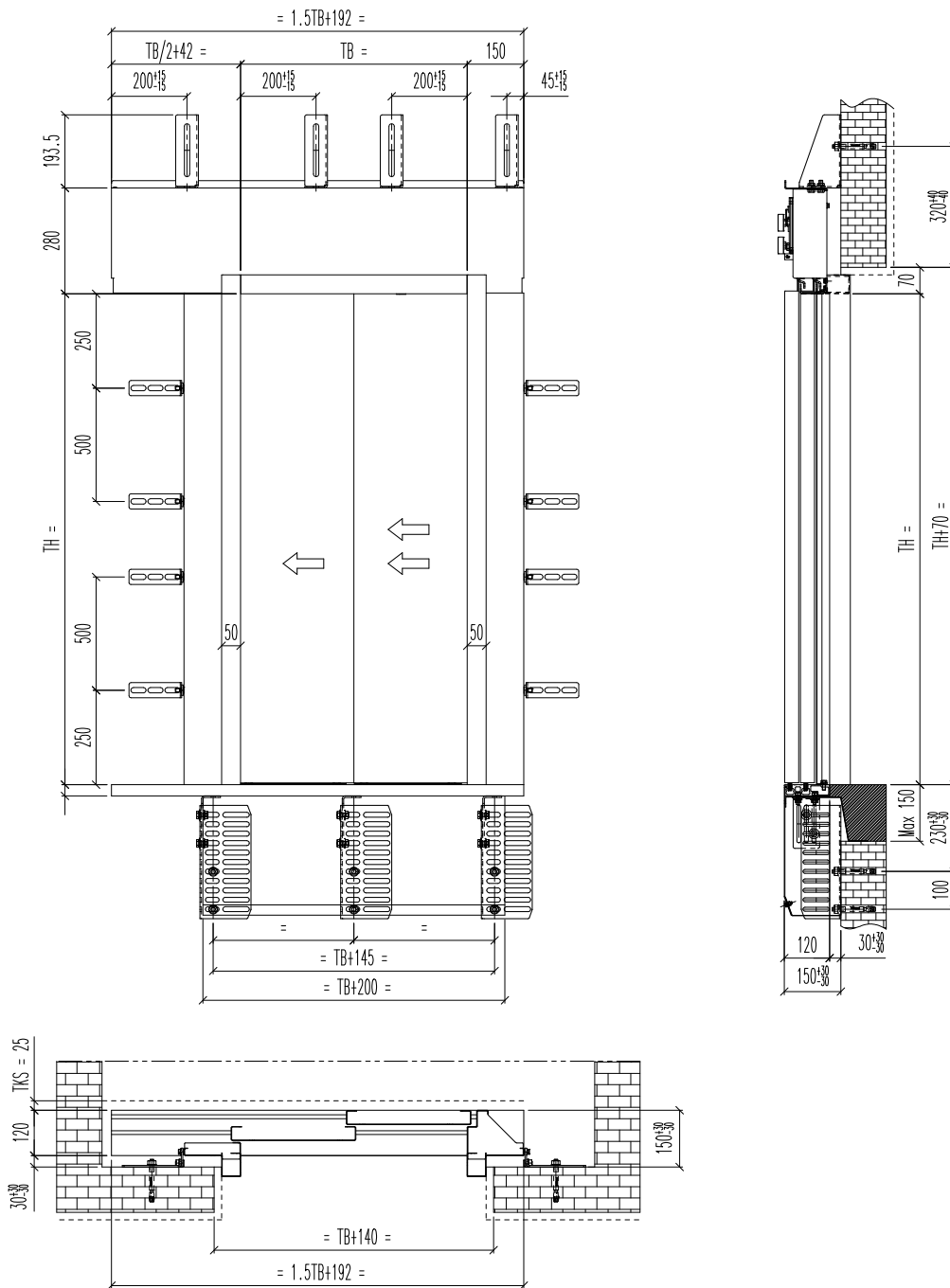
2L BOXED FRAME 100 LAYOUT: FRONT, SIDE VIEWS AND COUPLING



NOTES

- Boxed frame 100 mm
- 2L as drawing, 2R mirrored
- (*) Sill to sill distance 25 mm
- Setting distance: ± 30 mm with adjustable brackets
- Finished floor level from 50 to 250 mm
- For further information see our technical catalogues

2L BOXED FRAME 50 LAYOUT: FRONT, SIDE VIEWS AND COUPLING

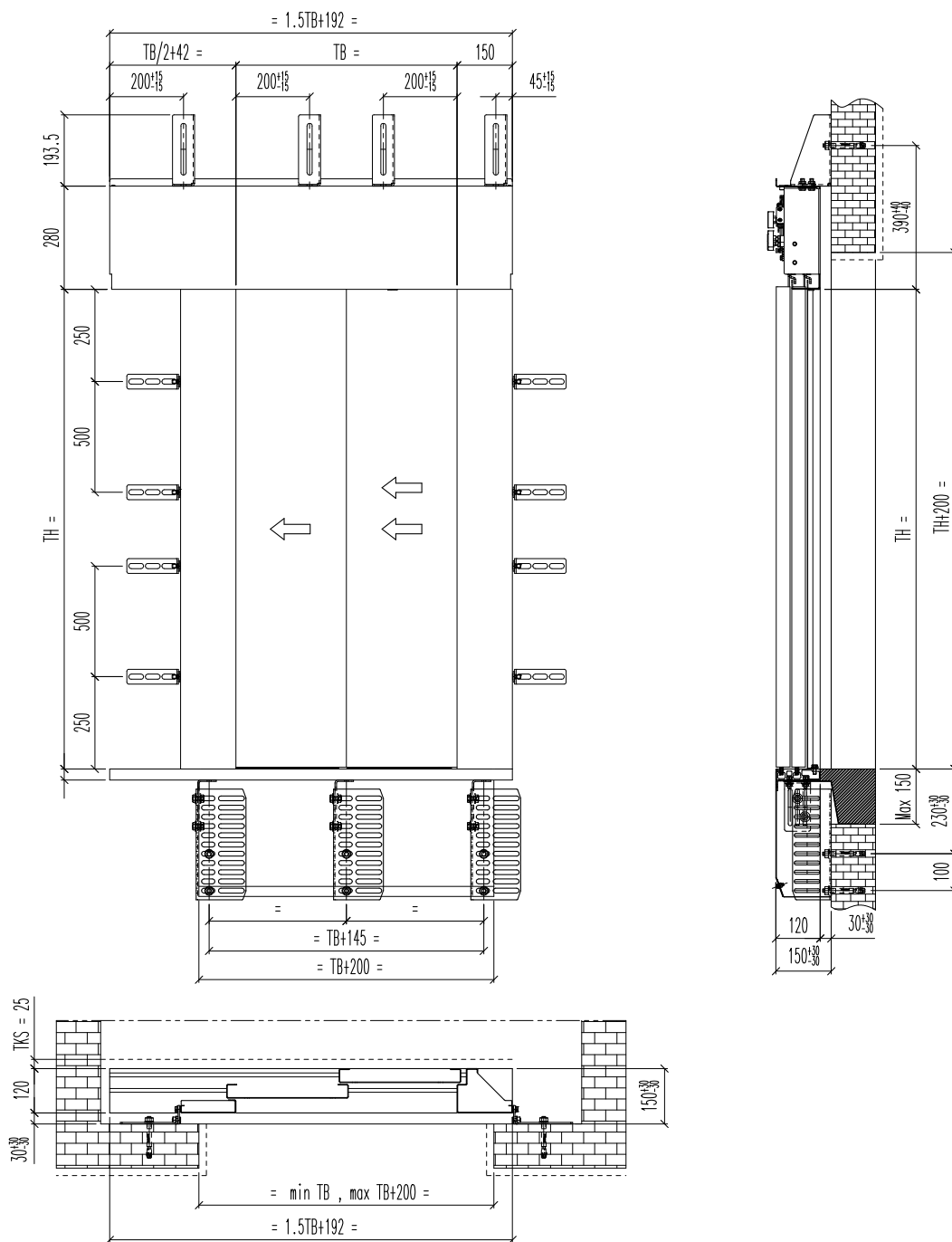


2000 B-HR

NOTES

- Boxed frame 50 mm (optional)
- 2L as drawing, 2R mirrored
- (*) Sill to sill distance 25 mm
- Setting distance: ± 30 mm with adjustable brackets
- Finished floor level from 50 to 250 mm
- For further information see our technical catalogues

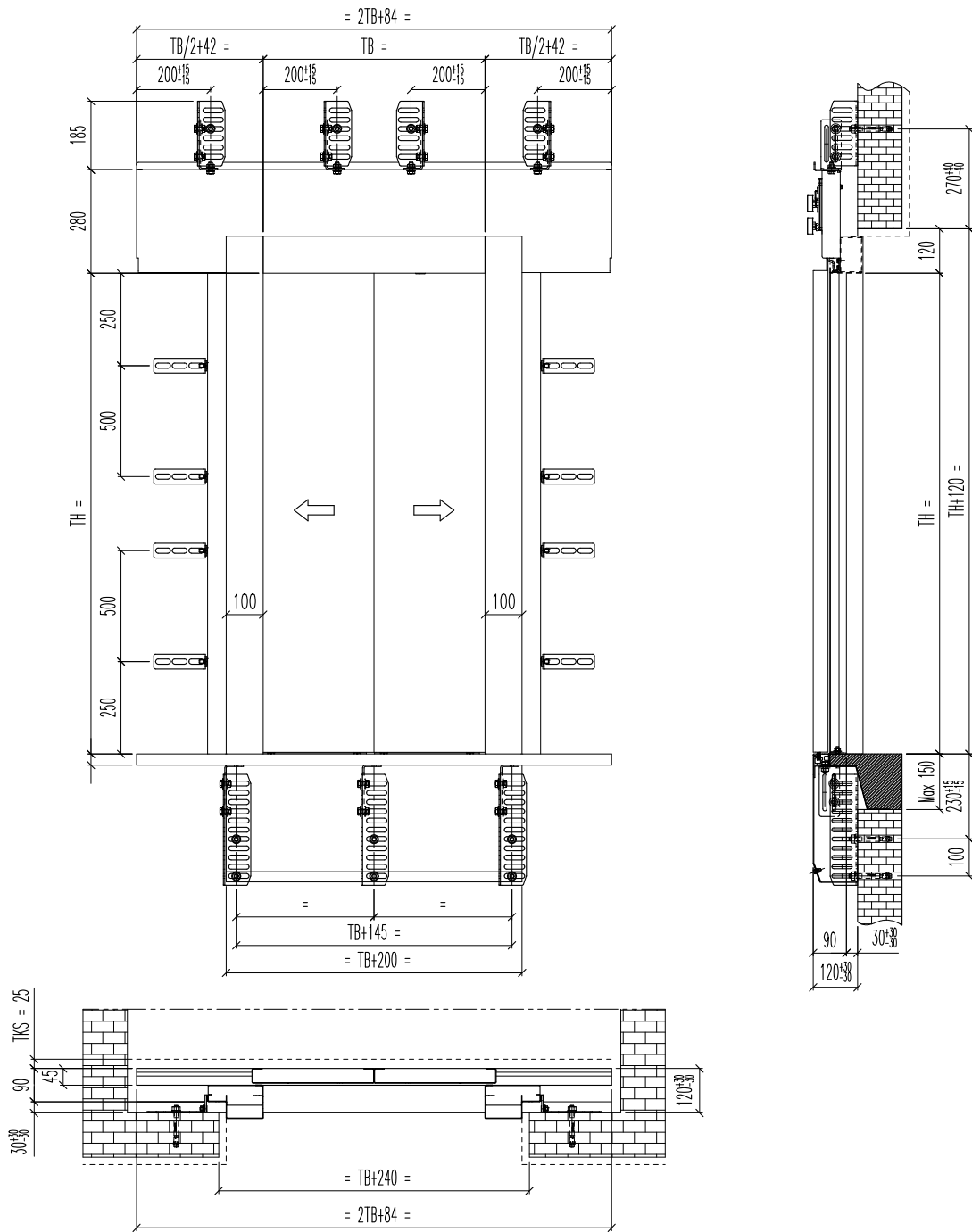
2L BASIC FRAME LAYOUT: FRONT, SIDE VIEWS AND COUPLING



NOTES

- Basic frame (optional)
- 2L as drawing, 2R mirrored
- (*) Sill to sill distance 25 mm
- Setting distance: ± 30 mm with adjustable brackets
- Finished floor level from 50 to 250 mm
- For further information see our technical catalogues

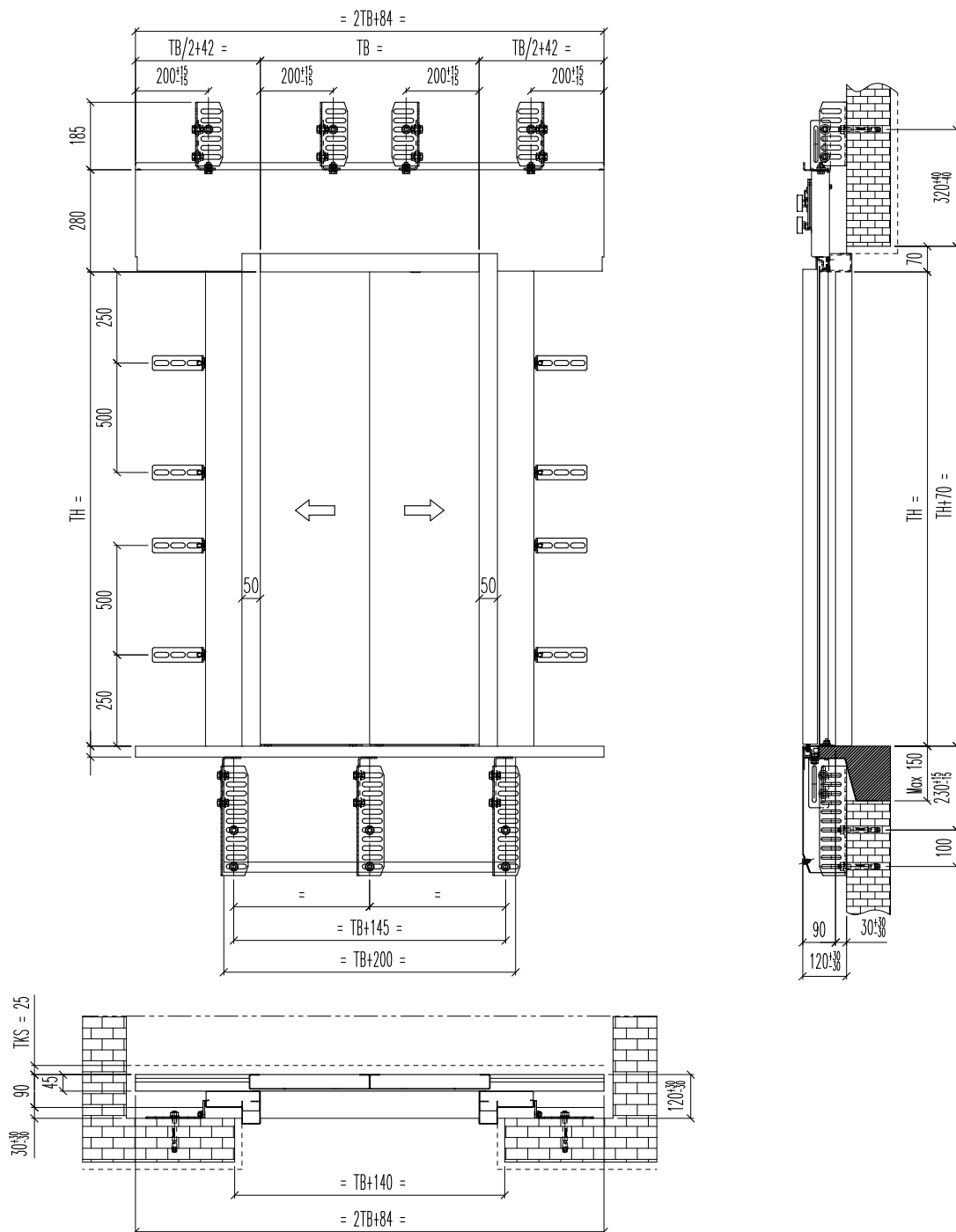
2Z BOXED FRAME 100 LAYOUT: FRONT, SIDE VIEWS AND COUPLING



NOTES

- Boxed frame 100 mm
- (*) Sill to sill distance 25 mm
- Setting distance: ± 30 mm with adjustable brackets
- Finished floor level from 50 to 250 mm
- For further information see our technical catalogues

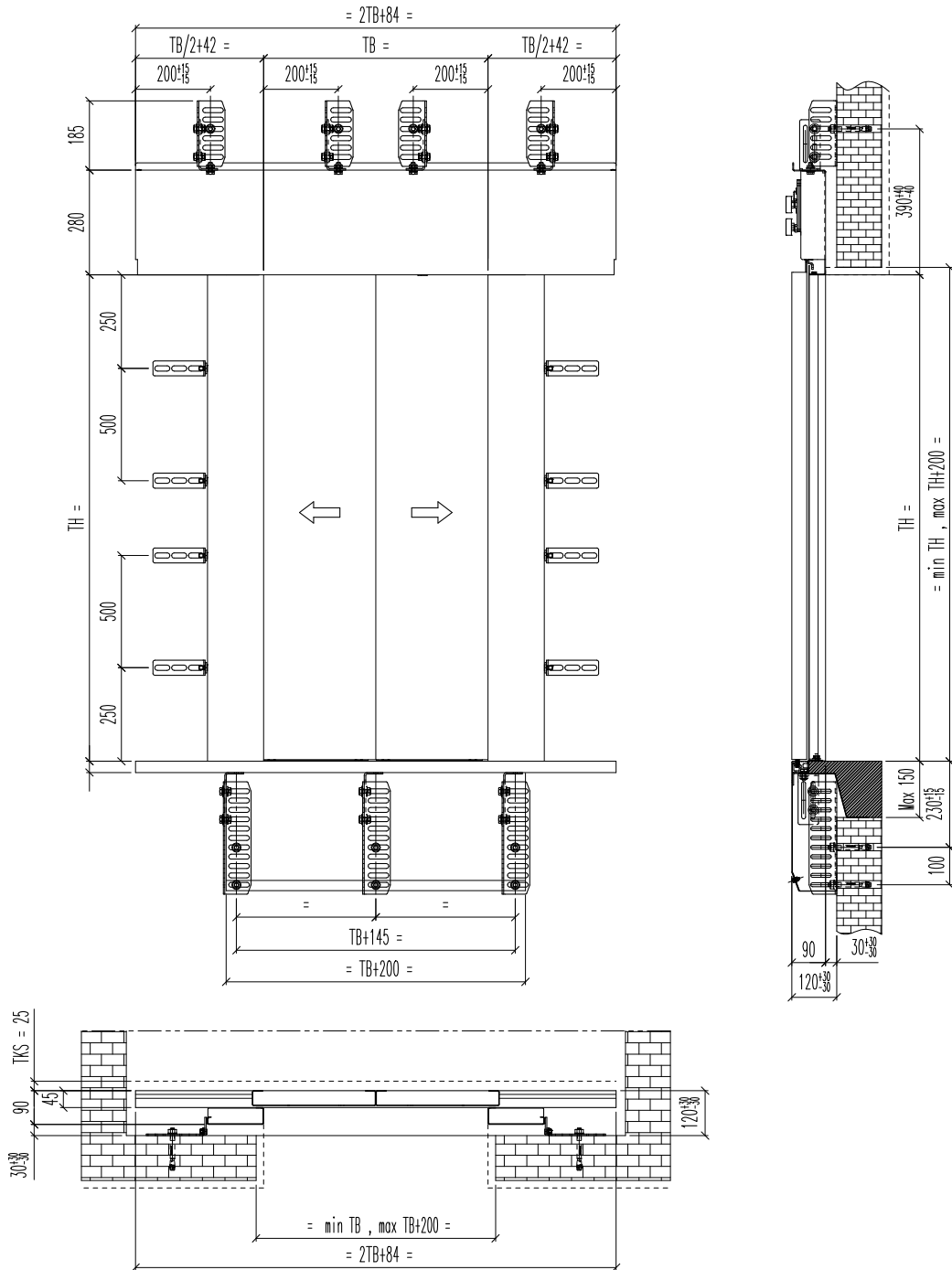
2Z BOXED FRAME 50 LAYOUT: FRONT, SIDE VIEWS AND COUPLING



NOTES

- Boxed frame 50 mm (optional)
- (*) Sill to sill distance 25 mm
- Setting distance: ± 30 mm with adjustable brackets
- Finished floor level from 50 to 250 mm
- For further information see our technical catalogues

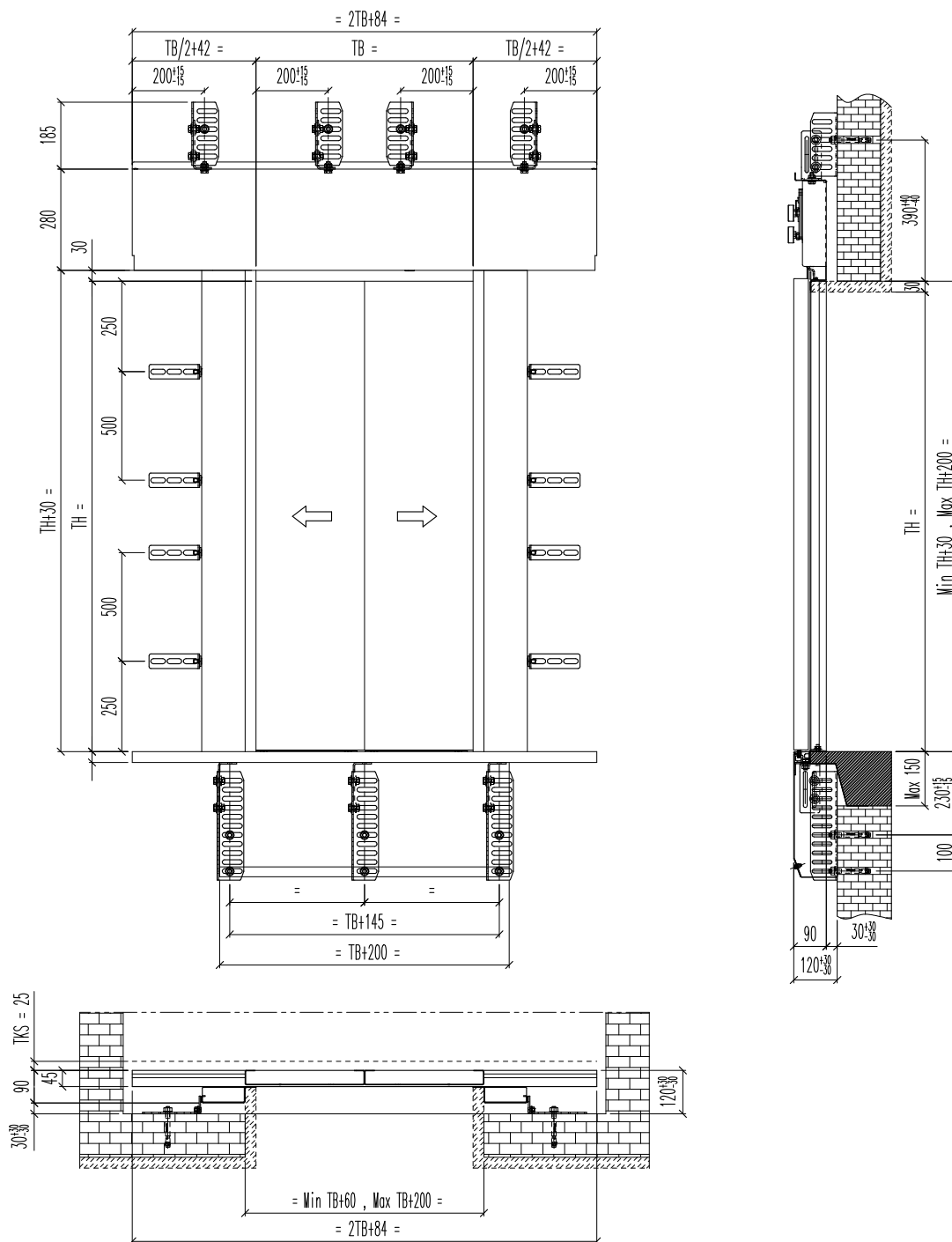
2Z BASIC FRAME LAYOUT: FRONT, SIDE VIEWS AND COUPLING



NOTES

- Basic frame (optional)
- (*) Sill to sill distance 25 mm
- Setting distance: ± 30 mm with adjustable brackets
- Finished floor level from 50 to 250 mm
- For further information see our technical catalogues

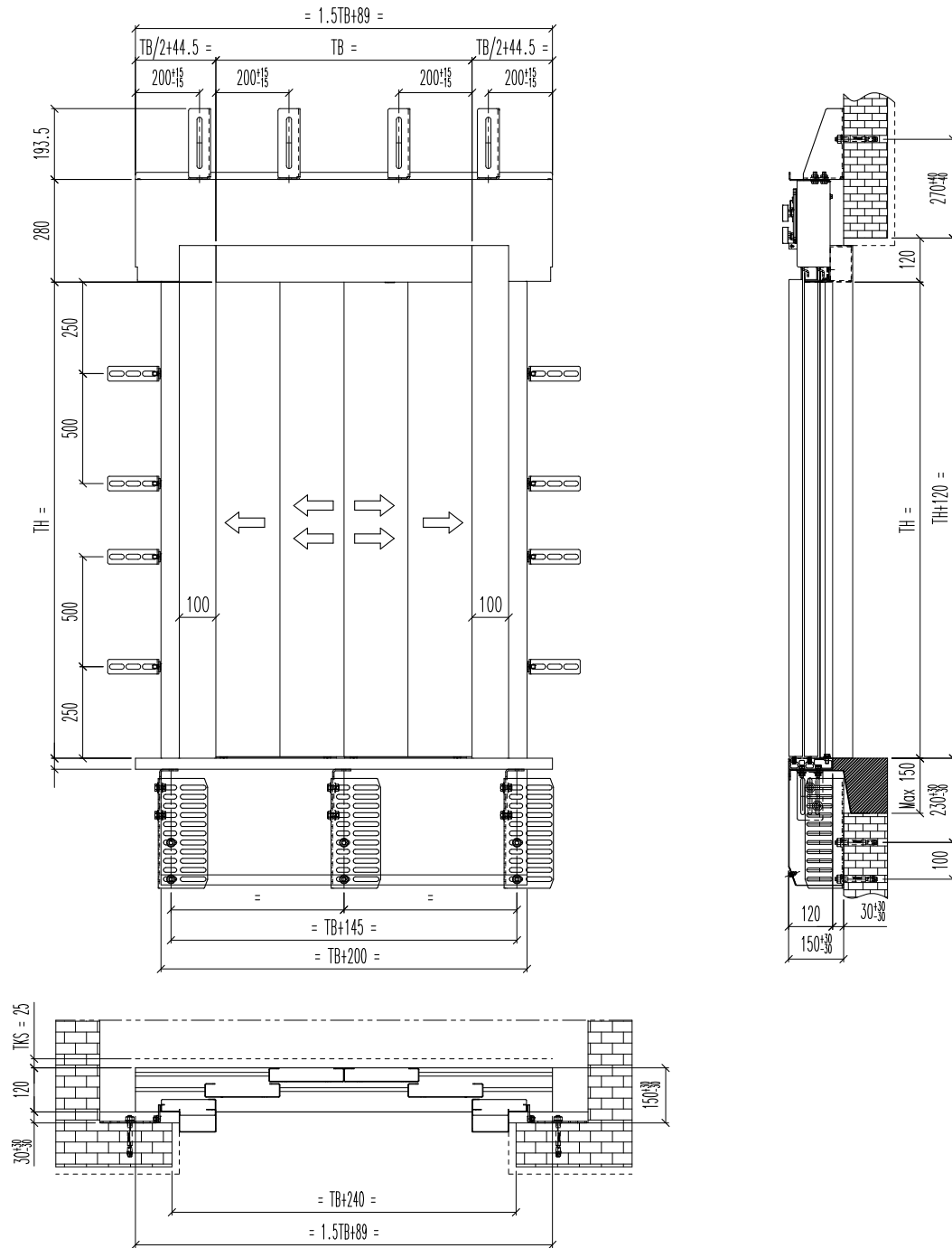
2Z ANGLE FRAME LAYOUT: FRONT, SIDE VIEWS AND COUPLING



NOTES

- Angle frame (optional)
- (*) Sill to sill distance 25 mm
- Setting distance: ± 30 mm with adjustable brackets
- Finished floor level from 50 to 250 mm
- For further information see our technical catalogues

4Z BOXED FRAME 100 LAYOUT: FRONT, SIDE VIEWS AND COUPLING

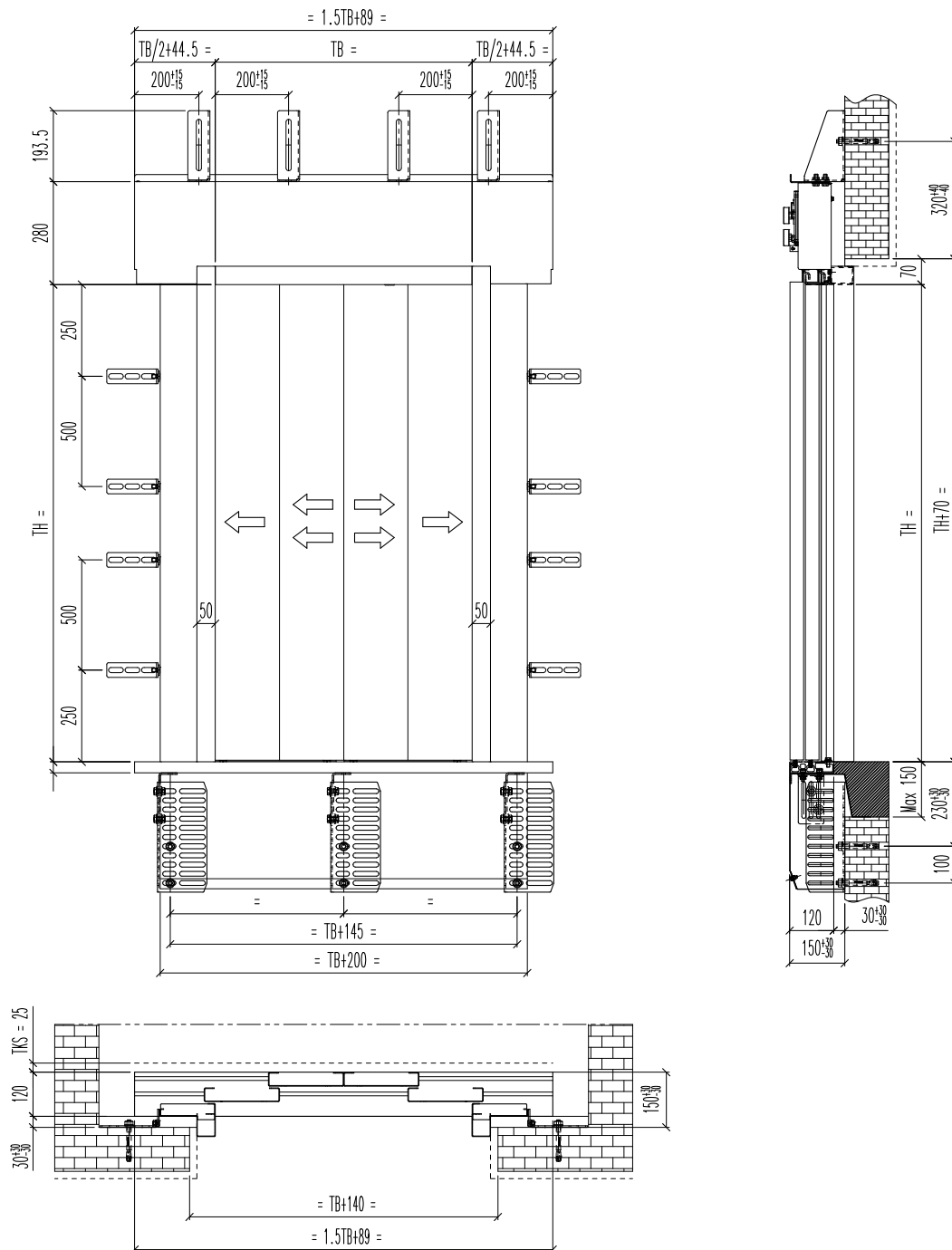


NOTES

- Boxed frame 100 mm
- (*) Sill to sill distance 25 mm
- Setting distance: ± 30 mm with adjustable brackets
- Finished floor level from 50 to 250 mm
- For further information see our technical catalogues

2000 B-HR

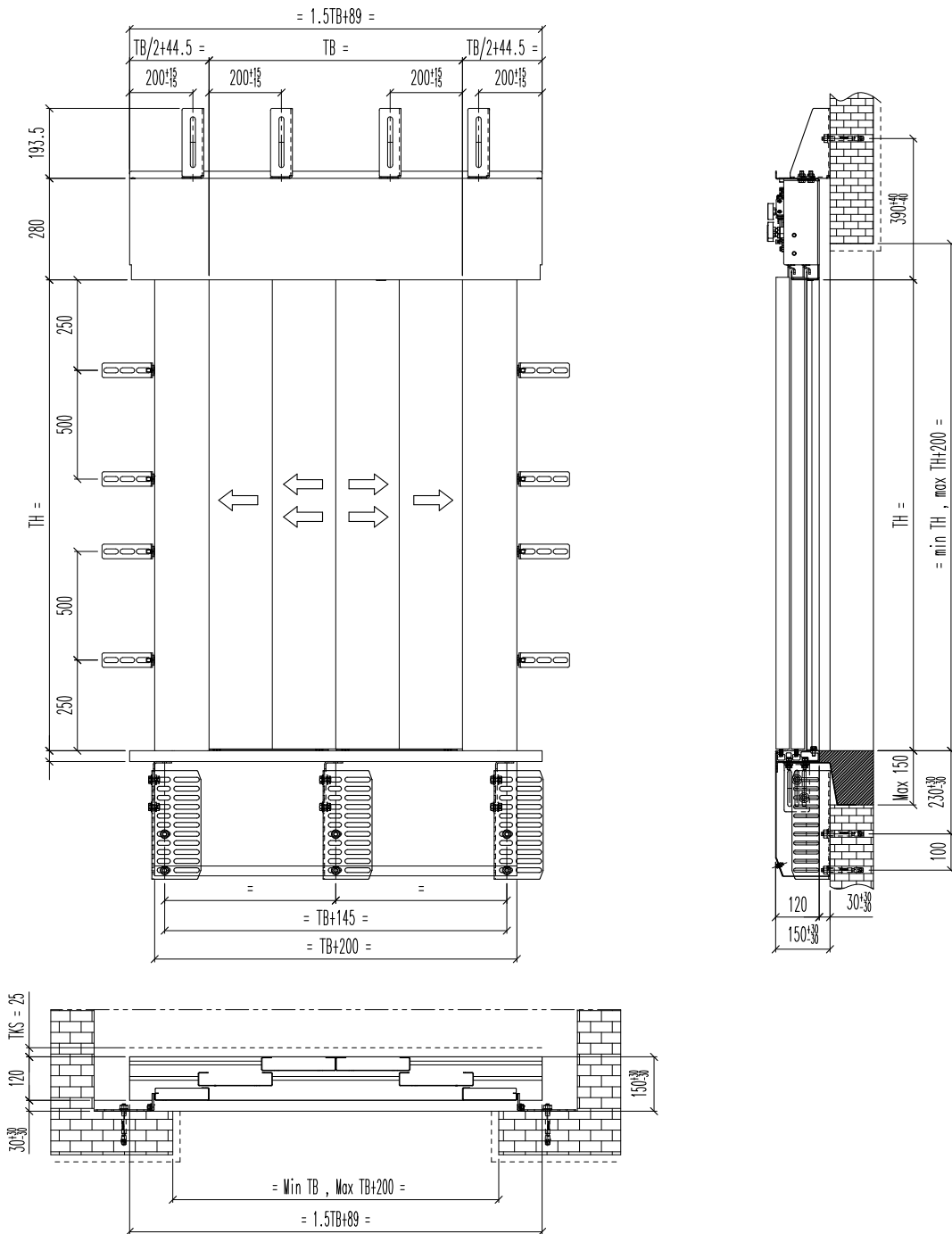
4Z BOXED FRAME 50 LAYOUT: FRONT, SIDE VIEWS AND COUPLING



NOTES

- Boxed frame 50 mm (optional)
- (*) Sill to sill distance 25 mm
- Setting distance: ± 30 mm with adjustable brackets
- Finished floor level from 50 to 250 mm
- For further information see our technical catalogues

4Z BASIC FRAME LAYOUT: FRONT, SIDE VIEWS AND COUPLING

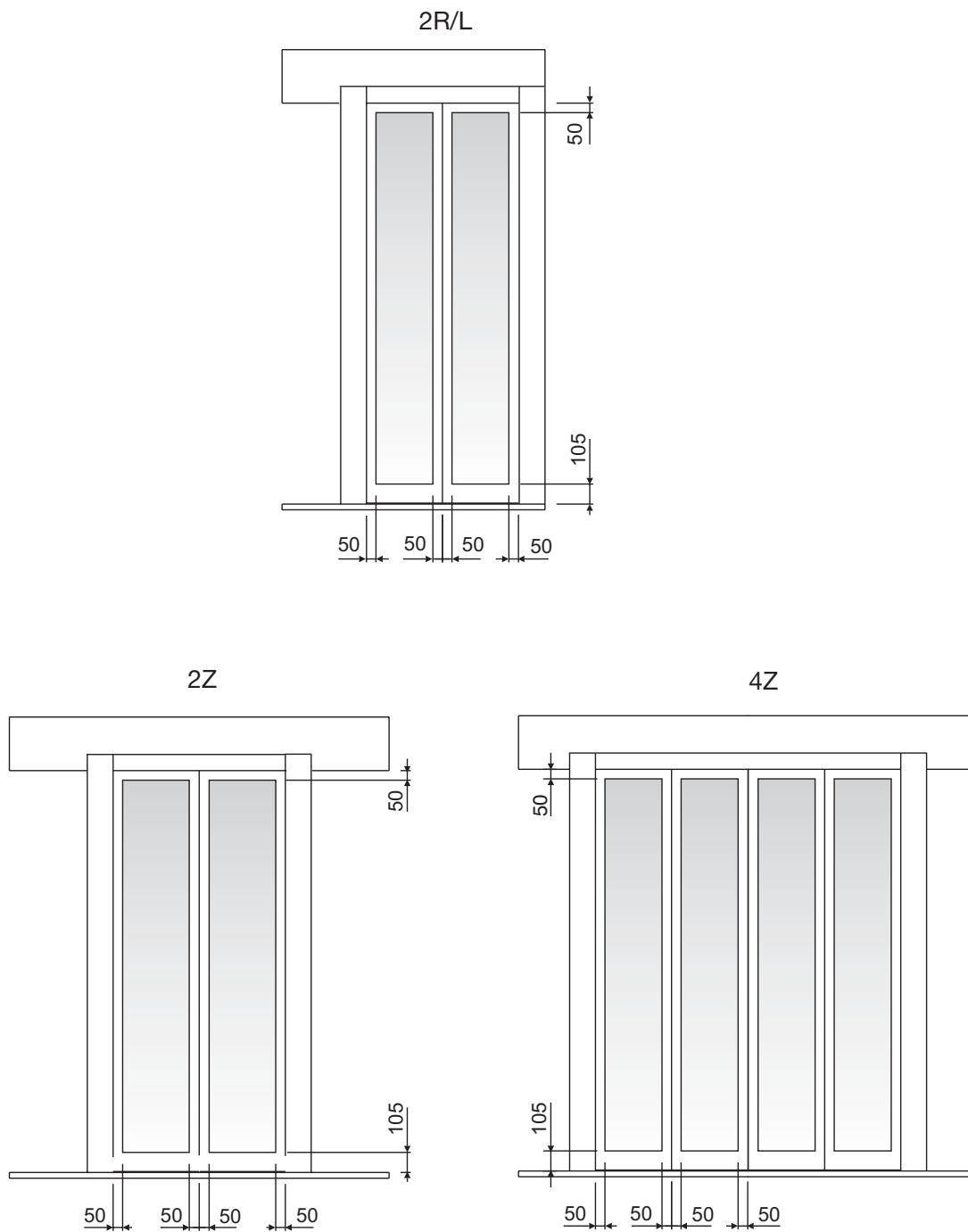


NOTES

- Basic frame (optional)
- (*) Sill to sill distance 25 mm
- Setting distance: ± 30 mm with adjustable brackets
- Finished floor level from 50 to 250 mm
- For further information see our technical catalogues

2000 B-HR

STANDARD CONSTRUCTION WITH FRAMED GLASS PANELS



NOTES

- EN 81-58 and BS476 glass panels available too.
- For further information see our technical catalogues



Italy

Sematic Spa - Group Headquarters

Via Zappa Comm. Francesco, 5
24046 Osio Sotto, Bergamo
Tel. +39 035 48 15 100 - Fax +39 035 48 15 199
e-mail info@sematic.com

Sematic Spa- Suisio Plant

Via dei Piazzoli, 1/5
24040 Suisio, Bergamo
Tel. +39 035 49 36 111 - Fax. +39 035 90 24 51
e-mail info@sematic.com

United Kingdom

Sematic UK Ltd

Meadow Gate, Valley Park Est.
Wombwell, Barnsley, South Yorkshire S73 0UN
Tel. +44 1226 344 800 - Fax. +44 1226 344 811
e-mail info@uk.sematic.com

Turkey

Sematic Asansör San.ve Tic.Ltd.Sti.

Necip Fazıl Bulvarı Keyap Çarşı Sitesi F2 Blok No.99
Yukarıdudullu / Ümraniye, 34775 İstanbul
Tel. +90 216 508 1470 (PBX) - Fax +90 216 508 1473
e-mail info@tr.sematic.com

Hungary

Sematic Hungária Kft

Debreceni út 273
4400 Nyiregyháza
Tel. +36 42 548 410 - Fax +36 42 548 419
e-mail info@hu.sematic.com

Singapore

Sematic Singapore Pte Ltd

8 Burn Road, 1301 Trivex
369977 Singapore
e-mail info@sg.sematic.com

China

Sematic Elevator Products (Suzhou) Co., Ltd

215121, No. 52 Weixi Road, Weiting Science Park
Suzhou Industrial Park
Tel. +86 512 8717 1819 - Fax +86 512 8717 1820
e-mail info@cn.sematic.com

Sematic Elevator Products (Changshu) Co.,Ltd.

215558, No 18 Jinmen Road Changshu Southeast
Economic Development Zone of Jiangsu
Tel. + 86 512 8717 1819 - Fax +86 512 8717 1820
e-mail info@cn.sematic.com

Sematic (Hong Kong) Ltd

Unit 1807, Mindas Plaza, No. 1 Tai Yau Street,
San Po Kong, Kowloon, Hong Kong
Tel. +852 219 47 166 - Fax +852 219 47 322
e-mail info@hk.sematic.com

India

Sematic RE Elevator Products (India) Pvt. Ltd

Madhuban, F-Wing, 1st Floor, W.E. Highway, Near Dahisar
Telephone Exchange, Dahisar (E), Mumbai 400068
Tel. +91 022 2897 2184 / 3184 - Fax +91 022 2897 8643
e-mail info@in.sematic.com

Mexico

Sematic Elevadores Mexico S. de R.L. de C.V.

Bldv Revolucion Mexicana n°1001 Col Barrera,
Monclova, Coahuila 25770
Tel. +52 (866) 648 3365 / 66 / 67 - Fax (ext 160)
e-mail info@tyler.sematic.com

USA

Tyler Elevator Products Div. of Sematic USA Inc.

7852, Bavaria Road
Twinsburg, Ohio 44087
Tel. +1 216 524 0100 - Fax. +1 216 524 9710
e-mail info@tyler.sematic.com

www.sematic.com