

The door for
modernization with
reduced dimensions

2000 T

2000 T

Automatic Lift Door

ENG



 **sematic**[®]
ELEVATOR PRODUCTS



APPLICATIONS		DESTINATION					
		PASSENGERS		GOODS		SPECIAL USES	
		DOORS	CARS	DOORS	CARS	DOORS	CARS
HOMELIFT		2000 T	ADAPTA VARIO				
RESIDENTIAL		2000 B 2000 C 2000 B-HR LOW	ADAPTA	2000 B-G	CARGO	2000 SWS	CUSTOM
OFFICES		2000 B 2000 C 2000 B-HR LOW	ADAPTA	2000 B-G	CARGO	2000 SWS 2000 R	CUSTOM PANOR./ CUSTOM
HIGH RISE		2000 B-HR MED 2000 B-HR TOP	VARIO	2000 B-G	CARGO	2000 HD	CARGO
HOSPITALS		2000 B 2000 B-HR LOW	VARIO	2000 B-G	ADAPTA	2000 B-G	ADAPTA
TRANSPORT		2000 B 2000 B-HR LOW	ADAPTA	2000 HD 2000 B-G	CARGO	2000 SWS	CUSTOM
MODERNIZATION		2000 T 2000 C-MOD	EASY ADAPTA	2000 B-G	CARGO	2000 HD	CARGO
HOTELS		2000 B 2000 B-HR LOW	VARIO	2000 B-G	ADAPTA	2000 R	PANORAMIC CUSTOM
SHOPPING CENTERS		2000 B 2000 B-HR LOW	ADAPTA	2000 B-G	ADAPTA	2000 HD 2000 R	CARGO PANOR./ CUSTOM
INDUSTRIAL				2000 B-G	CARGO	2000 HD	CUSTOM CARGO



The smallest in its kind

Reduced sill package for shaft with small space available

Light weight for better handling on site

Car door locking device

No additional building works required!

Reduced-dimension headers for ultra-compact spaces

Maximization of the available cabin capacity

4Z asymmetric opening available too

Reduced inter-floor distance, TH + 350 mm

Reduced dimensions, increased safety and reliability

Sematic 2000 T is the ideal solution for the modernization of residential lifts installed in shaft with small space available.

It has been designed and developed so that none of its components needs to be installed in recess, ensuring that during its installation no additional building works are necessary and the total capacity of the elevator system remains unchanged, guaranteeing in any situation the maximization of the available cabin capacity.

Thanks to its light weight and ease of adjustment, Sematic 2000 T is a door easy to handle and install, even on site.

The door meets the requirements of EN 81-1/2 and can be produced in two different configurations, with or without frame. For special situation it can be installed in niche, allowing a further saving of space in the shaft. 2000 T is available also with asymmetric opening.

PRODUCT RANGE

Model	TB min-max (mm)	TH min-max (mm)
K-S 2R/L	600 - 900	2000 - 2100
K-S 4Z	600 - 900	2000 - 2100
K-S 4Z - AS	600 - 900	2000 - 2100

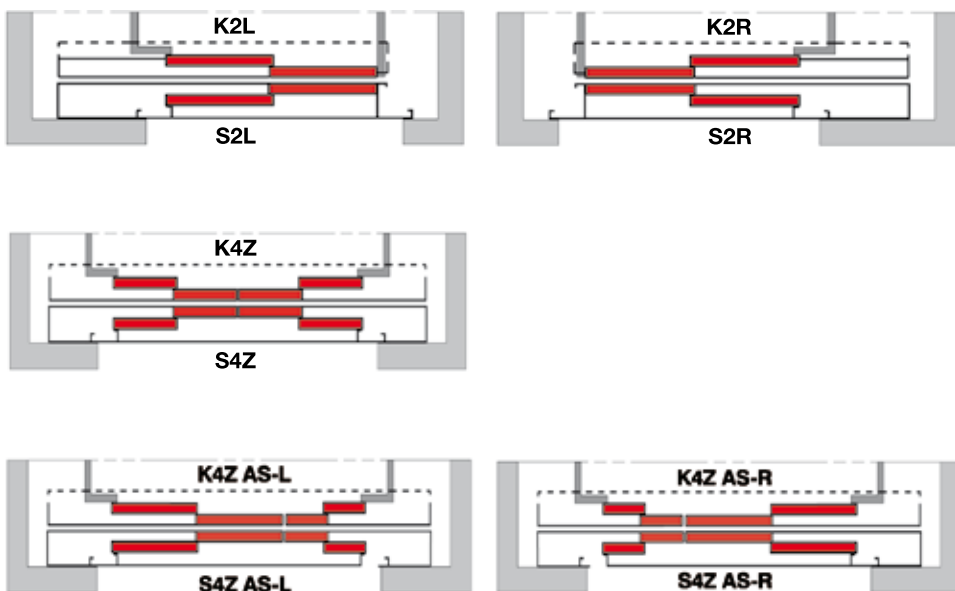
For further information see our technical catalogues

BOTTOM TRACK PACK OVERALL DIMENSION (mm)

Opening	K (car)	S (landing)	Pack (1)
2R/L	45	45	115
4Z	45	45	115
4Z - AS	45	45	115

⁽¹⁾ 25mm sill distance

DOOR OPENING TYPE



FIRE RATED EXECUTIONS - EN 81-58

Model	Steel doors
S 2R/L	E 120
S 4Z	
S 4Z - AS	

Call for information.

CABINS SUGGESTED FOR THIS DOOR

> EASY

STANDARD MOTORIZATION

Belt-driven operator with 24 Vdc optical encoder controller motor, SRS© DC-PWM technology with transformer

- Power supply voltage: controller: 24±10% Vac, 50-60 Hz; transformer: 230 Vac – Primary, 24 Vac- Secondary
- Power rated: 50 Watt (60 VA)
- Emergency power supply with battery
- Operating temperature range: -10°C to +60°C
- Operating humidity range: 20% to 80%
- On-board obstacle detection (door re-opening) feature
- Separately adjustable opening and closing speed
- Integrated self-learning cycle and automated speed profiles setting

DOOR AND FRAME FINISHES

STANDARD

OPTIONS

DOOR AND FRAME FINISHES	STANDARD	OPTIONS
RAL 7032 powder coating	✓	✗
Other RAL Colours	✗	✓
Stainless-steel claddings	✗	✓
Plastic laminate claddings	✗	✓

BOTTOM TRACK

STANDARD

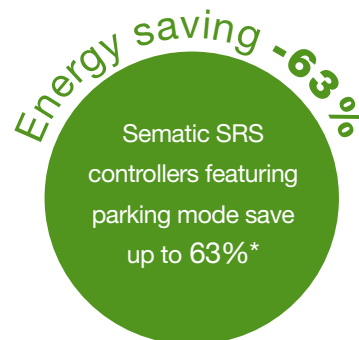
OPTIONS

BOTTOM TRACK	STANDARD	OPTIONS
Aluminum	✓	✗
Steel	✗	✓

SEMATIC FOR ENERGY SAVING

At Sematic, we take our energy use seriously. We have developed a set of technological devices that allow our elevator components to use as little energy as possible, such as our **Sematic SRS door controller**.

* Door power consumption difference between normal standby mode and parking mode measured in laboratory



EN-81

4Z execution shown
in the picture

MAIN FEATURES	STANDARD	OPTIONS
Certified locking device	EN81-1/2:1998 Lift Directive 95/16/EC	x
Emergency lock release	Integrated into the header	x
Door closing	Counterweight	x
Toe guard	✓	x
Inter-floor distance	Reduced (TH + 350) with standard brackets	x
Header	Galvanized steel, reduced height (140 mm only)	x
Carriages	Reinforced	x
Impact resistant packaging	Cardboard box- ISPM15	x
Push button cut-out (LOP)	x	In the side post of the box frame
Indicator cut-out (LIP)	x	In the header of the box frame
Upper tracks	Steel	x
Portal construction	x	With additional panels fixed to the standard frame
Protection	x	IP 20
Frame	Boxed	Naked

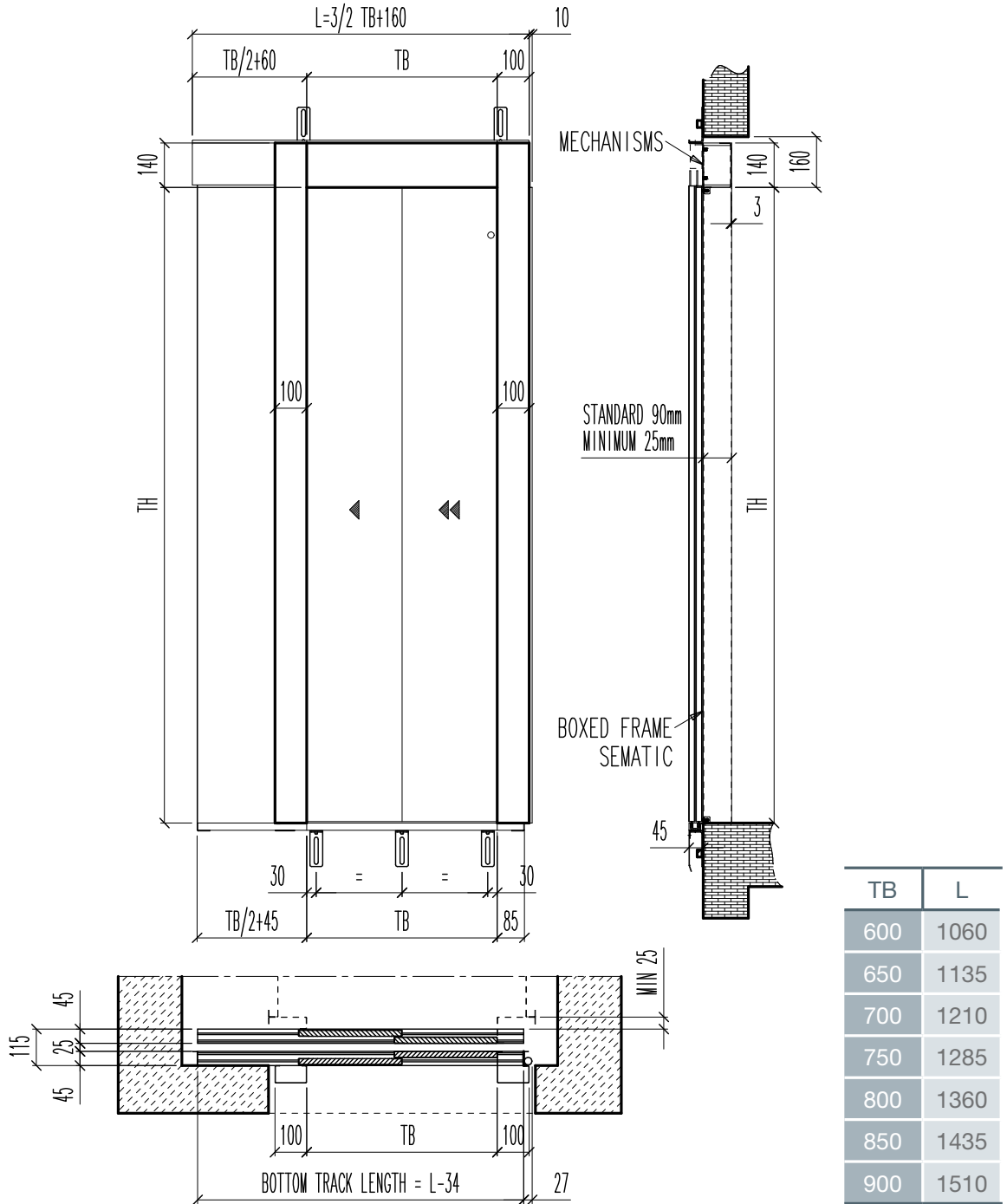


4Z execution
shown in the picture

MAIN FEATURES	STANDARD	OPTIONS
Compression skate	✓	✗
Motorization	See pag. 61	✗
Door controller	SRS	✗
Header	Galvanized steel, reduced height (160 mm only)	✗
Carriages	Reinforced	✗
Compatibility kits	Available for a wide range of existing installations	✗
Impact robust packaging	Cardboard box- ISPM15	✗
Locking device	✗	EN81-1/2 (★)
Toe guard	✗	✓
Detecting system	✗	Static
Landing door lock release key	✓	✗
Coupling kit for manual doors	✗	✓

(★) for asymmetric version, only TB=900

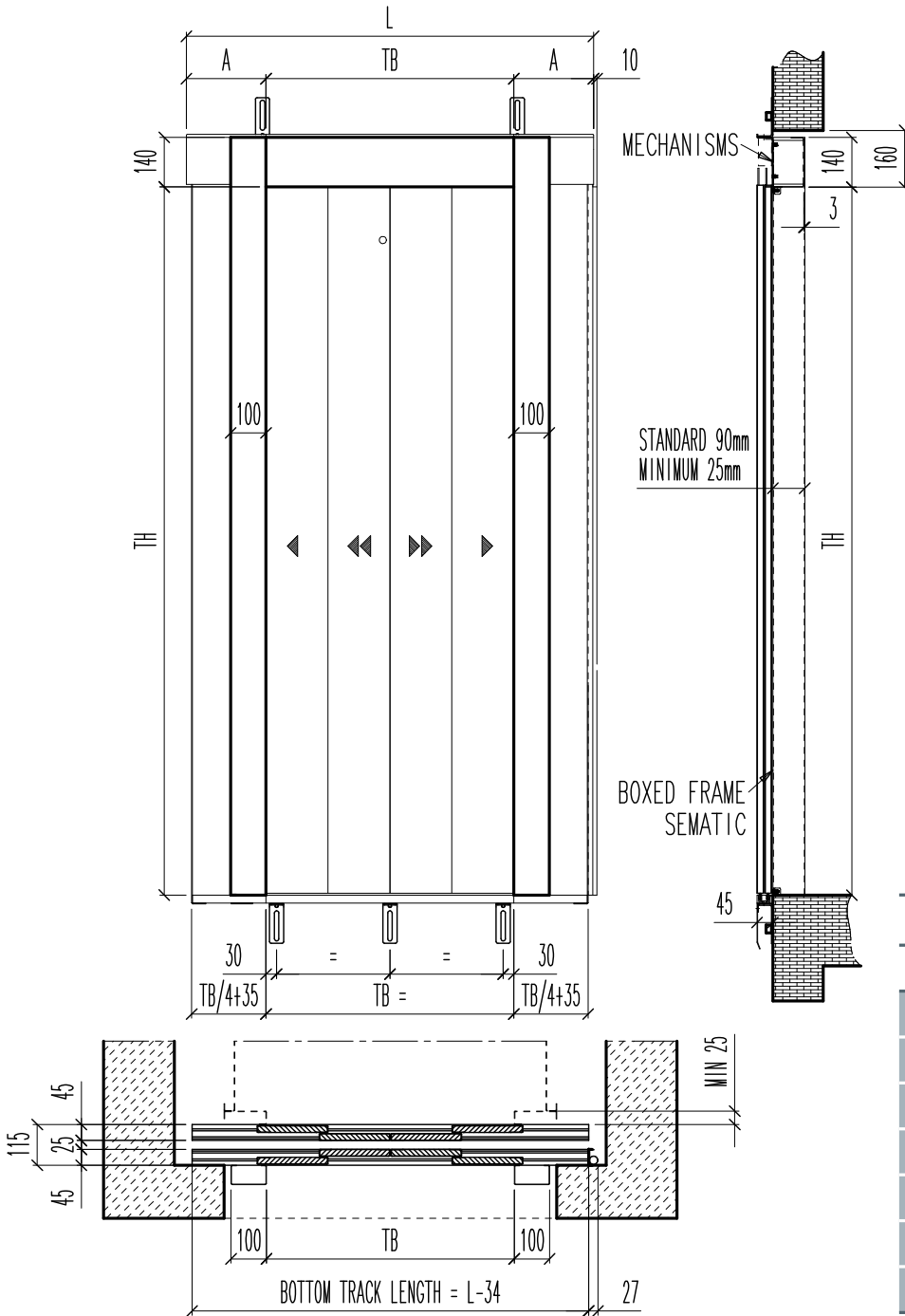
2L LAYOUT: FRONT, SIDE VIEWS AND COUPLING



NOTES

- Sill to sill distance min. 25 mm.
- 2L as drawing, 2R mirrored
- The doors can be supplied with or without 100mm frame
- For further information see our technical catalogues

4Z SYMMETRIC LAYOUT: FRONT, SIDE VIEWS AND COUPLING

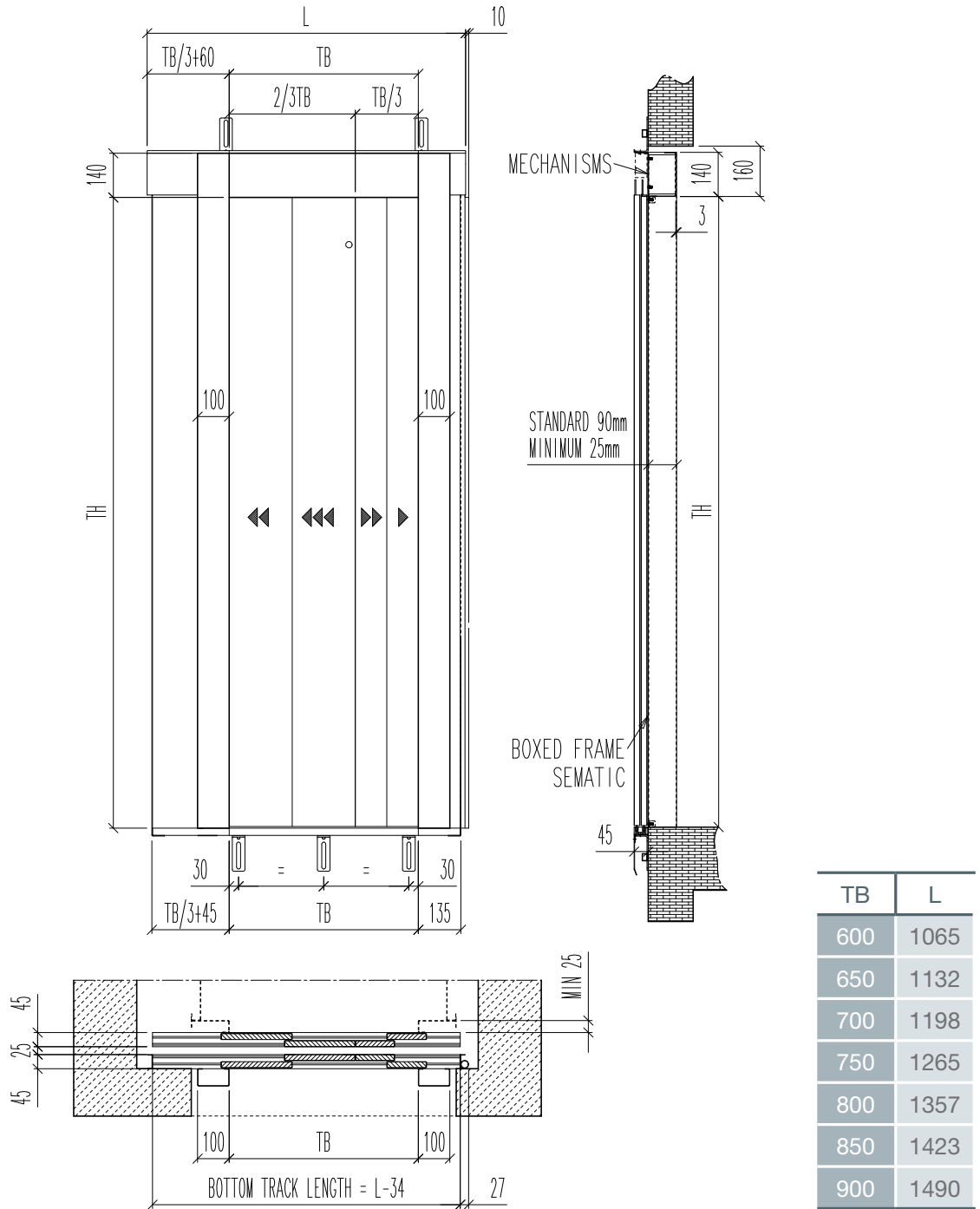


TB	TH 2000		TH 2100	
	L	A	L	A
600	1050	225,0	1100	250,0
650	1100	225,0	1150	250,0
700	1150	225,0	1200	250,0
750	1244	247,0	1244	247,0
800	1319	259,5	1319	259,5
850	1394	272,0	1394	272,0
900	1469	284,5	1469	284,5

NOTES

- Sill to sill distance min. 25 mm.
- The doors can be supplied with or without 100mm frame
- For further information see our technical catalogues

4Z ASYMMETRIC-L LAYOUT: FRONT, SIDE VIEWS AND COUPLING



NOTES

- Sill to sill distance min. 25 mm.
- 4Z AS-L as drawing, 4Z AS-R mirrored
- The doors can be supplied with or without 100mm frame
- For further information see our technical catalogues



Italy

Sematic Spa - Group Headquarters

Via Zappa Comm. Francesco, 5
24046 Osio Sotto, Bergamo
Tel. +39 035 48 15 100 - Fax +39 035 48 15 199
e-mail info@semaic.com

Sematic Spa- Suisio Plant

Via dei Piazzoli, 1/5
24040 Suisio, Bergamo
Tel. +39 035 49 36 111 - Fax. +39 035 90 24 51
e-mail info@semaic.com

United Kingdom

Sematic UK Ltd

Meadow Gate, Valley Park Est.
Wombwell, Barnsley, South Yorkshire S73 0UN
Tel. +44 1226 344 800 - Fax. +44 1226 344 811
e-mail info@uk.semaic.com

Turkey

Sematic Asansör San.ve Tic.Ltd.Sti.

Necip Fazıl Bulvarı Keyap Çarşı Sitesi F2 Blok No.99
Yükarıdudullu / Ümraniye, 34775 İstanbul
Tel. +90 216 508 1470 (PBX) - Fax +90 216 508 1473
e-mail info@tr.semaic.com

Hungary

Sematic Hungária Kft

Debreceni út 273
4400 Nyiregyháza
Tel. +36 42 548 410 - Fax +36 42 548 419
e-mail info@hu.semaic.com

Singapore

Sematic Singapore Pte Ltd

8 Burn Road, 1301 Trivex
369977 Singapore
e-mail info@sg.semaic.com

China

Sematic Elevator Products (Suzhou) Co., Ltd

215121, No. 52 Weixi Road, Weiting Science Park
Suzhou Industrial Park
Tel. +86 512 8717 1819 - Fax +86 512 8717 1820
e-mail info@cn.semaic.com

Sematic Elevator Products (Changshu) Co.,Ltd.

215558, No 18 Jinmen Road Changshu Southeast
Economic Development Zone of Jiangsu
Tel. + 86 512 8717 1819 - Fax +86 512 8717 1820
e-mail info@cn.semaic.com

Sematic (Hong Kong) Ltd

Unit 1807, Mindas Plaza, No. 1 Tai Yau Street,
San Po Kong, Kowloon, Hong Kong
Tel. +852 219 47 166 - Fax +852 219 47 322
e-mail info@hk.semaic.com

India

Sematic RE Elevator Products (India) Pvt. Ltd

Madhuban, F-Wing, 1st Floor, W.E. Highway, Near Dahisar
Telephone Exchange, Dahisar (E), Mumbai 400068
Tel. +91 022 2897 2184 / 3184 - Fax +91 022 2897 8643
e-mail info@in.semaic.com

Mexico

Sematic Elevadores Mexico S. de R.L. de C.V.

Bldv Revolucion Mexicana n°1001 Col Barrera,
Monclova, Coahuila 25770
Tel. +52 (866) 648 3365 / 66 / 67 - Fax (ext 160)
e-mail info@tyler.semaic.com

USA

Tyler Elevator Products Div. of Sematic USA Inc.

7852, Bavaria Road
Twinsburg, Ohio 44087
Tel. +1 216 524 0100 - Fax. +1 216 524 9710
e-mail info@tyler.semaic.com

www.semaic.com