



Doors for residential
and office buildings

2000 B-CUBIC

Automatic Lift Doors

ENG



APPLICATIONS		DESTINATION					
		PASSENGERS		GOODS		SPECIAL USES	
		DOORS	CARS	DOORS	CARS	DOORS	CARS
HOMELIFT		2000 T 2000 C-MOD	ADAPTA VARIO				
RESIDENTIAL		2000 B 2000 C 2000 B-HR LOW 2000 B-CUBIC	ADAPTA	2000 B-G	CARGO	2000 SWS	CUSTOM
OFFICES		2000 B 2000 C 2000 B-HR LOW 2000 B-CUBIC	ADAPTA	2000 B-G	CARGO	2000 SWS 2000 R	CUSTOM PANOR./ CUSTOM
HIGH RISE		2000 B-HR MED 2000 B-HR TOP	VARIO	2000 B-G	CARGO	2000 HD	CARGO
HOSPITALS		2000 B 2000 B-HR LOW	VARIO	2000 B-G	ADAPTA	2000 B-G	ADAPTA
TRANSPORT		2000 B 2000 B-HR LOW	ADAPTA	2000 HD 2000 B-G	CARGO	2000 SWS	CUSTOM
MODERNIZATION		2000 T 2000 C-MOD	EASY ADAPTA	2000 B-G	CARGO	2000 HD	CARGO
HOTELS		2000 B 2000 B-HR LOW 2000 B-HR MED 2000 B-HR TOP	VARIO	2000 B-G	ADAPTA	2000 R	PANORAMIC CUSTOM
SHOPPING CENTERS		2000 B 2000 B-HR LOW	ADAPTA	2000 B-G	ADAPTA	2000 HD 2000 R	CARGO PANOR./ CUSTOM
INDUSTRIAL				2000 B-G	CARGO	2000 HD	CUSTOM CARGO



A safe, reliable and cost effective solution, easy to install and maintain

Ideal for residential and office buildings, Sematic 2000 B-CUBIC is designed, produced and tested to satisfy international technical and qualitative standards, with special care to safety, reliability and cost efficiency.

Sematic 2000 B-CUBIC includes a series of smart solutions developed in order to guarantee maximum easiness of installation and low maintenance: such as, for example, the new landing door lock design for quicker adjustment

as well as door posts that are installed above the floor level and do not require installation in niche.

Sematic 2000 B-CUBIC features self-supporting panels available in a wide range of different materials and finishes, galvanized steel header, belt-driven expansion skate, aluminum sill and closing system with springs.

All of the components are guaranteed by Sematic brand, symbol of quality and reliability for over 50 years.

PRODUCT RANGE

Modello	TB min-max (mm)	TH min-max (mm)
K-S 2R/L	700	2000 - 2100
	800 - 1200	2000 - 2200
K-S 2Z	700	2000 - 2100
	800 - 1200	2000 - 2200

BOTTOM TRACK PACK OVERALL DIMENSION (mm)

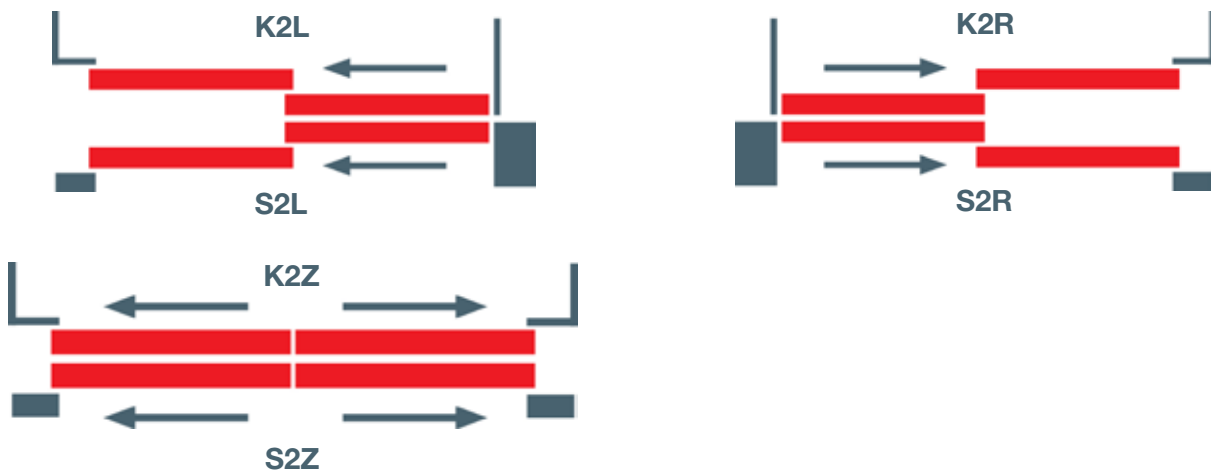
Opening	K (car)	S (landing)	Pack ⁽¹⁾
2R/L	85	120	230
2Z	45	90 ⁽²⁾	160

⁽¹⁾ with 25 mm sill to sill distance

⁽²⁾ Slim sill available too

For further information see our technical catalogues

DOOR OPENING TYPE



FIRE RATED EXECUTIONS - EN 81-58

Model

Steel doors

S 2R/L

S 2Z

EN 81-58 E 120

BS 476 available. Call for information.

CABINS SUGGESTED FOR THIS DOOR

> ADAPTA

STANDARD MOTORIZATION

Belt-driven operator with 24 Vdc optical encoder controller motor, SZS© DC-PWM technology with transformer

- Power supply voltage: 90-290 Vac, 50-60 Hz
- Power rated: 40 Watt (50 VA)
- Operating temperature range: -10°C to +60°C
- Operating humidity range: up to 80%
- On-board obstacle detection (door re-opening) feature
- Separately adjustable opening and closing speed
- Integrated self-learning cycle and automated speed profiles setting

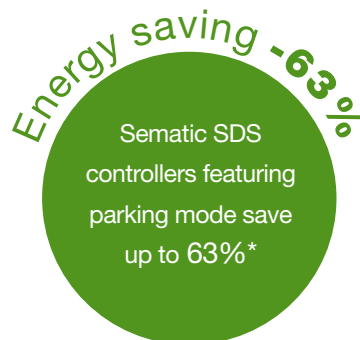
DOOR AND FRAME FINISHES	STANDARD	OPTIONS
RAL 7032 powder coating	✓	✗
Other RAL Colours	✗	✓
Framed glass	✗	✓
Solid construction stainless steel	✗	✓

BOTTOM TRACK	STANDARD	OPTIONS
Aluminum	✓	✗

SEMATIC FOR ENERGY SAVING

At Sematic, we take our energy use seriously. We have developed a set of technological devices that allow our elevator components to use as little energy as possible, such as our **Sematic SDS door controller**.

* Door power consumption difference between normal standby mode and parking mode measured in laboratory

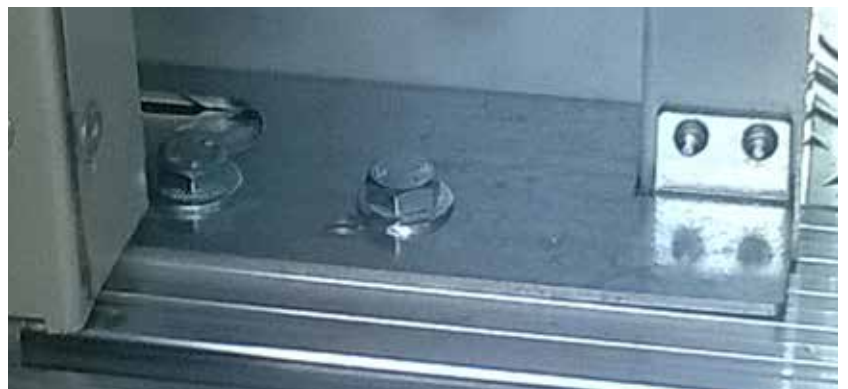




2Z execution shown in the picture

MAIN FEATURES		STANDARD			OPTIONS		
Certified locking device		EN81-1/2:1998 Lift Directive 95/16/EC			✘		
Emergency lock release		In the header			In the panel		
Door closing		Spring			✘		
Toe guard		✓			✘		
Brackets		Standard with tolerances: see layout			Adjustable, easy brackets		
Header		Galvanized			RAL		
Frame		W	D	H	W	D	H
		100	60	100	50	60	50
					120	60	160
Sill	2Z	Alu (90 mm)			Slim (45 mm)		
	2R/L	Alu (120 mm)			✘		
Push button cut-out (LOP)		✘			In the side post of the box frame		
Indicator cut-out (LIP)		✘			In the header of the box frame		
Upper tracks		Alu			✘		
Protection		IP 20			✘		
Lock release key		✓			✘		
Packaging		Cardboard box			ISPM-15		

W = Width
D = Depth
H = Header



2R/L execution shown in the picture

2000 B-CUBIC

Car Door

MAIN FEATURES	STANDARD	OPTIONS
Expansion skate	✓	✗
Door drive controller	See pag. 5	SDS
Motor control	DC-PWM Standard	
Header	Galvanized	✗
Car door locking device	✗	EN81-1/2
Cabin door apron	✗	✓
Detecting system	✗	Static
Packaging	Cardboard box	ISPM-15

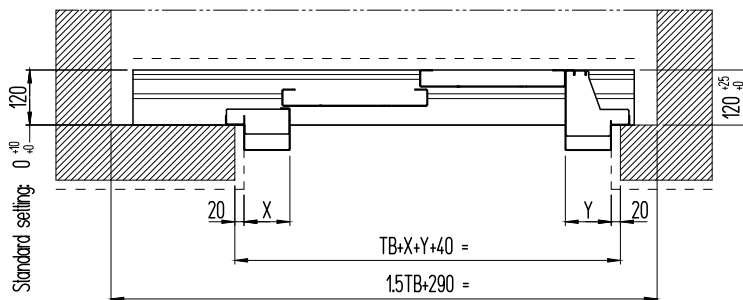
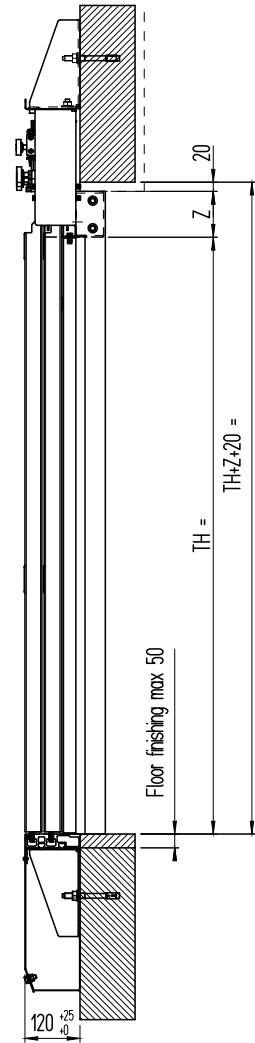
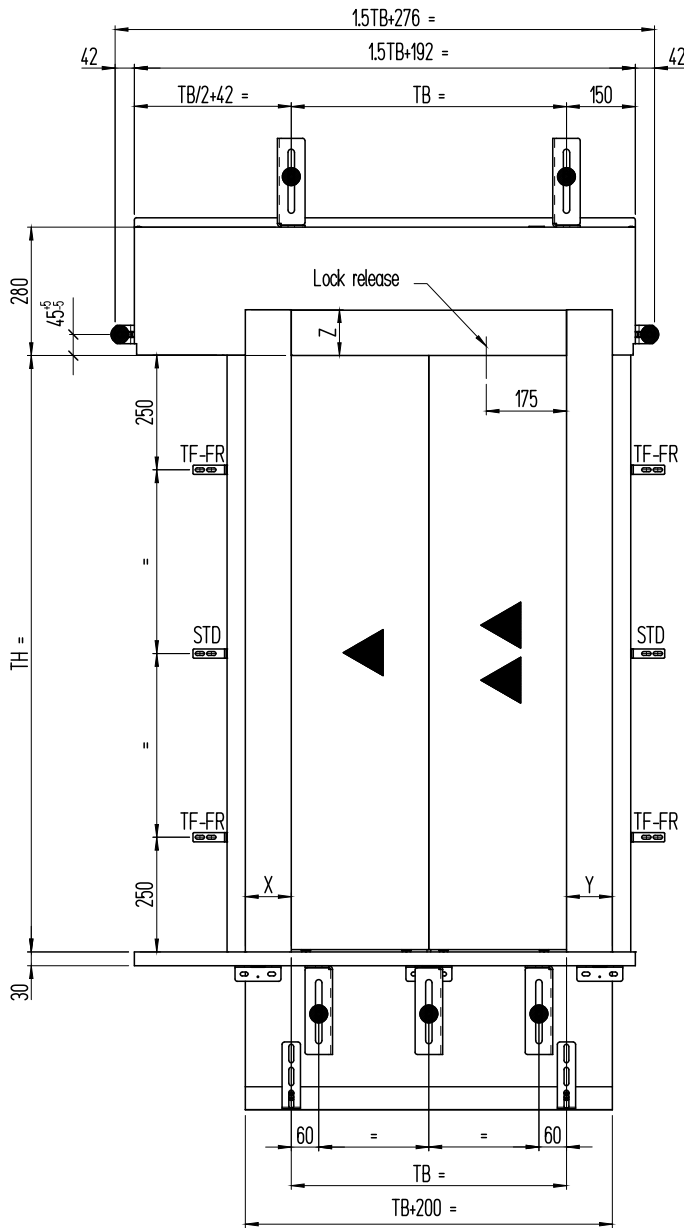
2000 B-CUBIC

Characteristics

MAIN APPLICATION CONTEXT CHARACTERISTICS

Elevator speed [m/sec]	< 2,5
Max number of cycles [nr/year]	250.000
Framed glass panels	✓ only with SDS

2R/L LAYOUT: FRONT, SIDE AND PLAN VIEWS



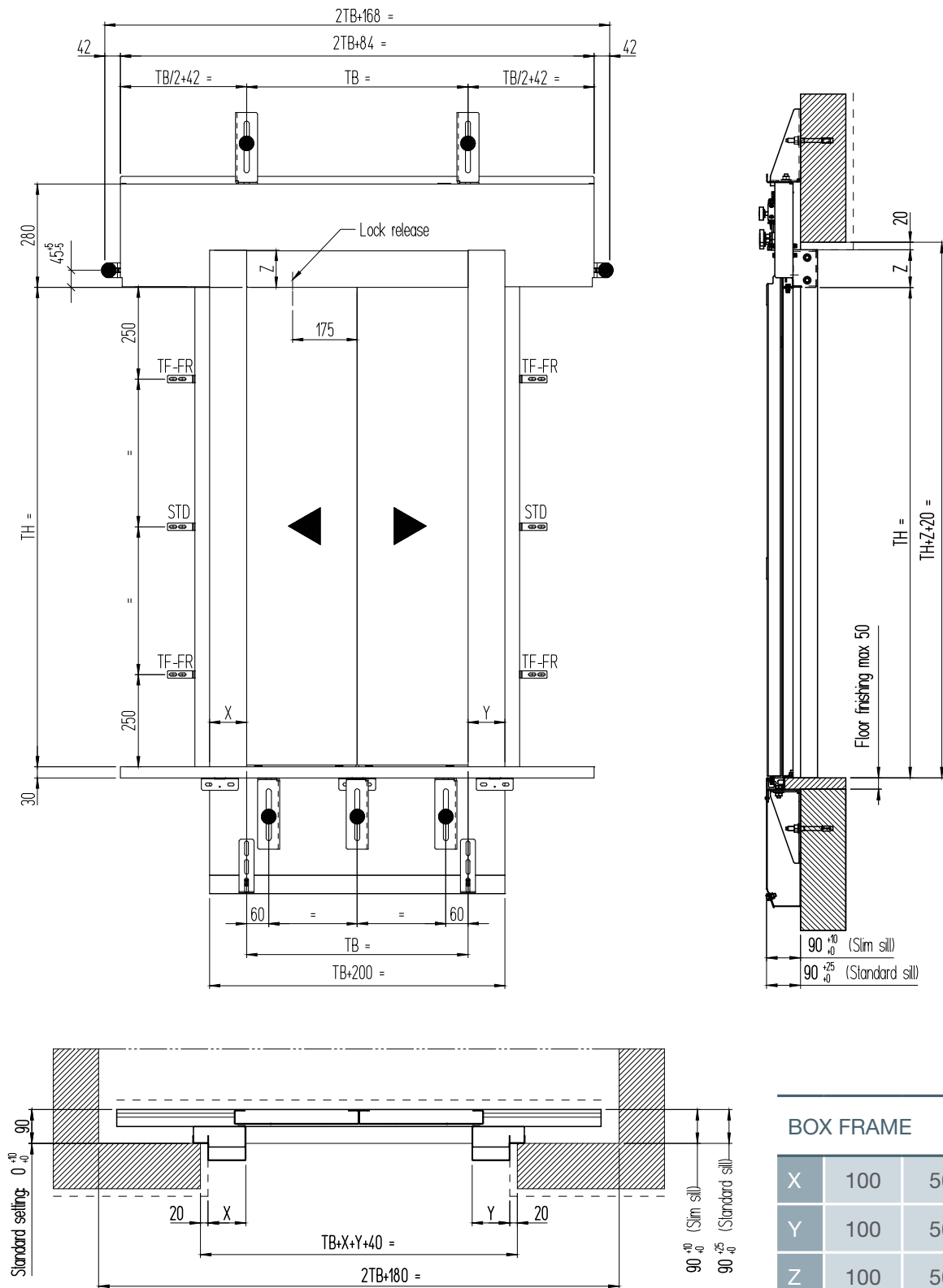
BOX FRAME

X	100	50	120
Y	100	50	120
Z	100	50	160

NOTES

- 2L as drawing, 2R mirrored
- For further information see our technical catalogues
- Setting distance: 0-60 mm with easy brackets

2Z LAYOUT: FRONT, SIDE AND PLAN VIEWS



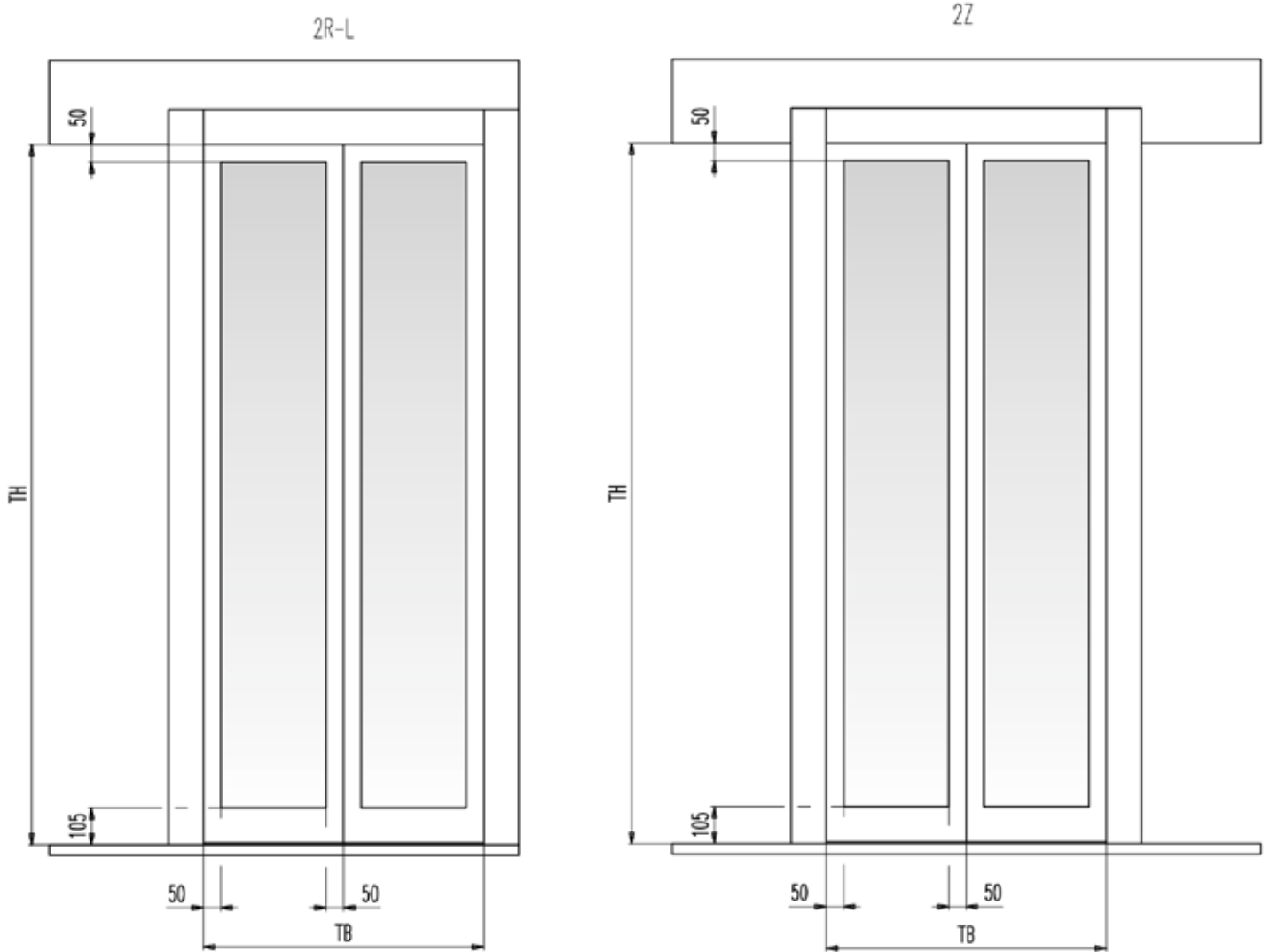
BOX FRAME

X	100	50	120
Y	100	50	120
Z	100	50	160

NOTES

- For further information see our technical catalogues
- Setting distance: 0-60 mm with easy brackets

STANDARD CONSTRUCTION WITH FRAMED GLASS PANELS



NOTES

- For further information see our technical catalogues





Italy

Sematic Spa - Group Headquarters
Via Zappa Comm. Francesco, 5
24046 Osio Sotto, Bergamo
Tel. +39 035 48 15 100 - Fax +39 035 48 15 199
e-mail: info@sematic.com

Sematic Spa - Suisio Plant
Via dei Piazzoli, 1/5
24040 Suisio, Bergamo
Tel. +39 035 49 36 111 - Fax. +39 035 90 24 51
e-mail: info@sematic.com

United Kingdom

Sematic UK Ltd
Meadow Gate, Valley Park Est.
Wombwell, Barnsley, South Yorkshire S73 0UN
Tel. +44 1226 344 800 - Fax. +44 1226 344 811
e-mail: info@uk.sematic.com

Hungary

Sematic Hungária kft
Debreceni út 273
4400 Nyíregyháza,
Tel. +36 42 548 410 - Fax +36 42 548 419
e-mail: info@hu.sematic.com