

# PE insulation Flat Cable For Elevator

## Main Performance Index

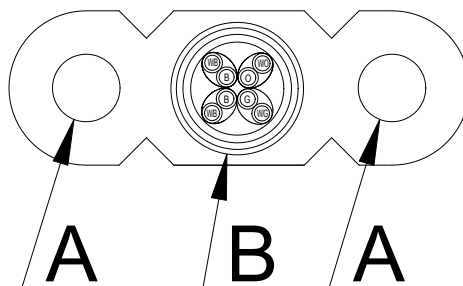
1. Type : TVVBG
2. Specification : CAT5E(SFTP)
3. Voltage Grade : 45V
4. Working temperature : 0-40°C
5. Max working temperature of cable conductor : 70°C
6. The cable conductor apply to GB/T3956-2008(IEC60228:2004 , IDT)
7. Insulating Material : PE Insulating Material
8. Sheathing Material : Lead-free PVC Elastomeric Covering Material
9. Finished Cable Voltage Test : 2000V,5minutes without puncture
10. Insulating cable core voltage test : 1500V, 5minutes without puncture

## General Parameters

Nominal Cross Section ( AWG )	Insulating Thickness ( mm )	Sheathing Thickness ( mm )			Minimum Insulation Resistance at 20°C ( $\geq$ M $\Omega$ .km )	Maxmum Conductor DC Resistance at 20°C ( $\leq$ $\Omega$ /km )	Dimension ( Width× Thickness mm )	Reference Weight ( kg/km )
		e1	e2	e3				
26	0.20	2.0	1.2	1.4	3000	133.0	17.5×9.1	275.7

Drawing of cable TVVBP CAT5E

REMARK:



A:Special Steel Wire Rope、 B:CAT5E(SF/UTP) Colour Of Core:White/Blue-Blue、  
White/Orange-Orange、 White/Green-Green、 White/Brown-Brown