



Doors for heavy duty applications

2000 HD

Automatic Lift Door

ENG

2000 HD



 **sematic**<sup>®</sup>  
ELEVATOR PRODUCTS



APPLICATIONS		DESTINATION					
		PASSENGERS		GOODS		SPECIAL USES	
		DOORS	CARS	DOORS	CARS	DOORS	CARS
HOMELIFT		2000 T	ADAPTA VARIO				
RESIDENTIAL		2000 B 2000 C 2000 B-HR LOW	ADAPTA	2000 B-G	CARGO	2000 SWS	CUSTOM
OFFICES		2000 B 2000 C 2000 B-HR LOW	ADAPTA	2000 B-G	CARGO	2000 SWS 2000 R	CUSTOM PANOR./ CUSTOM
HIGH RISE		2000 B-HR MED 2000 B-HR TOP	VARIO	2000 B-G	CARGO	<b>2000 HD</b>	CARGO
HOSPITALS		2000 B 2000 B-HR LOW	VARIO	2000 B-G	ADAPTA	2000 B-G	ADAPTA
TRANSPORT		2000 B 2000 B-HR LOW	ADAPTA	<b>2000 HD</b> 2000 B-G	CARGO	2000 SWS	CUSTOM
MODERNIZATION		2000 T 2000 C-MOD	EASY ADAPTA	2000 B-G	CARGO	<b>2000 HD</b>	CARGO
HOTELS		2000 B 2000 B-HR LOW	VARIO	2000 B-G	ADAPTA	2000 R	PANORAMIC CUSTOM
SHOPPING CENTERS		2000 B 2000 B-HR LOW	ADAPTA	2000 B-G	ADAPTA	<b>2000 HD</b> 2000 R	CARGO PANOR./ CUSTOM
INDUSTRIAL				2000 B-G	CARGO	<b>2000 HD</b>	CUSTOM CARGO



Very strong panels and door posts for more robustness

Reinforced overall structure to support heavy loads

Ideal for heavy duty industrial and transport applications

Door posts partially installed on the floor for more stability

Bottom track in extra-reinforced steel

Pre-set car door front for easier installation and coupling

Wide TB x TH dimensional range, up to 6000 x 5000 mm!

Highly customizable; glass door finishes included

## Increasing resistance and durability for heavy-load, large-size applications

2000 HD is Sematic's product line dedicated to extreme applications. These doors feature very strong and reinforced panels and door posts as well as bottom track in extra-reinforced steel; its structure has been designed to support heavy loads, well fitting in contexts such as industrial, transportation and other special applications.

Door posts are partially installed on the floor to give more stability. 2000 HD is supplied together with pre-set car

door front, in order to better couple with the landing door, resulting in a robust structure in which installation settings are reduced.

A wide range of optional extras and certifications is available, from the EEx II G – Atex option, to glass door finishes and highly customizable solutions, such as, for example, the possibility of reaching 6000 x 5000 mm openings.

### PRODUCT RANGE

Model	TB min-max (mm)	TH min-max (mm)
K-S 2R/L <sup>(1)</sup>	1800 - 3500	2000 - 4000
K-S 3R/L	1800 - 3500	2000 - 4000
K-S 2Z <sup>(1)</sup>	1800 - 4500	2000 - 4000
K-S 4Z	1800 - 4500	2000 - 4500
K-S 6Z	3000 - 4500	2000 - 4500

<sup>(1)</sup> Custom execution

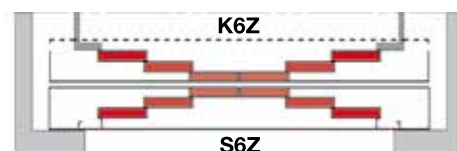
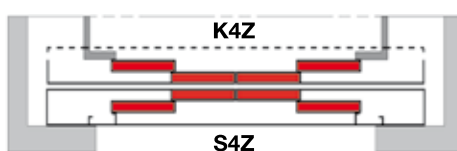
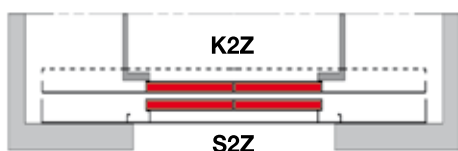
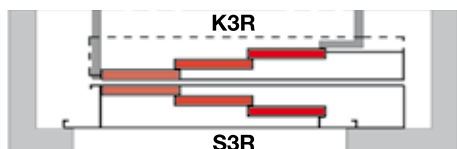
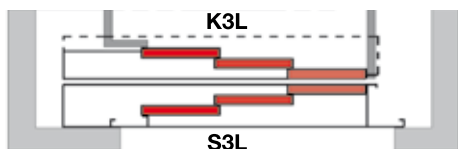
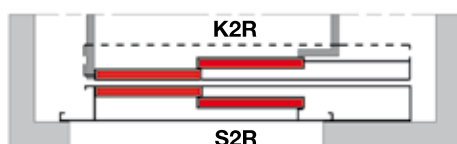
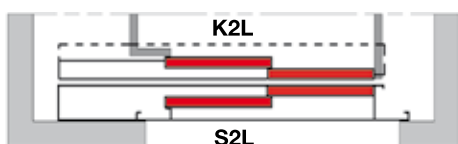
For further information see our technical catalogues

### BOTTOM TRACK PACK OVERALL DIMENSION (mm)

Opening	K (car)	S (landing)	Pack <sup>(1)</sup>
2R/L	Custom	Custom	Custom
3R/L	270	270	565
2Z	Custom	Custom	Custom
4Z	210	210	465
6Z	270	270	565

<sup>(2)</sup> 25mm sill distance

### DOOR OPENING TYPE



### FIRE RATED EXECUTIONS - EN 81-58

Model	Steel doors	Framed glass doors
S 3R/L	E 120	E 120
S 4Z	EW 60 EI 60	
S 6Z	EI 120	

### CABIN SUGGESTED FOR THIS DOOR

> CARGO

## STANDARD MOTORIZATION

Car door operator with 230/430 Vac Brushless Motor with optical Encoder controlled by an electronic card with microprocessor (SDS© - AC-VVVF HV-MV Technology).

- Power supply voltage: 230/430 Vac single or three phase
- Installed power: 1300 VA
- Operating temperature range: from -10°C to +60°C
- Operating humidity range: from 20% to 80% non-condensing
- Self learning cycle at the first installation in order to acknowledge the door dimension and form the opening and closing curve
- Opening and closing speeds separately adjustable and the system is equipped with an integrated adjustable device for reopening doors after detecting the presence of an obstacle

## DOOR AND FRAME FINISHES

## STANDARD

## OPTIONS

RAL 7032	✓	✗
Other RAL Colours	✗	✓
Framed glass panels	✗	Custom execution
Stainless-steel claddings	✗	✓
Skinplate claddings	✗	✓

## BOTTOM TRACK

## STANDARD

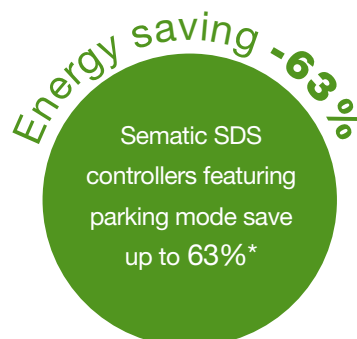
## OPTIONS

Extra-Reinforced steel	✓	✗
Stainless-steel	✗	AISI 304 / AISI 316

## SEMATIC FOR ENERGY SAVING

At Sematic, we take our energy use seriously. We have developed a set of technological devices that allow our elevator components to use as little energy as possible, such as our **Sematic SDS door controller**.

\* Door power consumption difference between normal standby mode and parking mode measured in laboratory



EN-81



6Z execution shown  
in the picture

MAIN FEATURES	STANDARD	OPTIONS
Certified locking device	EN81-1/2:1998 Lift Directive 95/16/EC	x
Emergency key	In the panel	Side posts
Door closing	Counterweight Spirator	x
Toe guard	✓	x
Upper, side brackets, angle for support and for wall or frame fixing	✓	x
Door panels	Single skin	Double skin
Long life guide shoes	✓	x
Impact robust packaging	Cardboard box- ISPM15	x
Push button cut-out (LOP)	x	✓
Upper tracks	Reinforced in aluminum	x
Sematic E.O.D (Emergency Opening Device)	x	✓
Contacts cover plate	x	IP-X3
Anti-vandal execution	x	EN 81-71
Bottom track	Welded plates	With removable plates
Water-resistant contacts	x	IP 54, IP 65, IP 67
Frame	235x135 mm door posts	x
Rollers	Increased	x

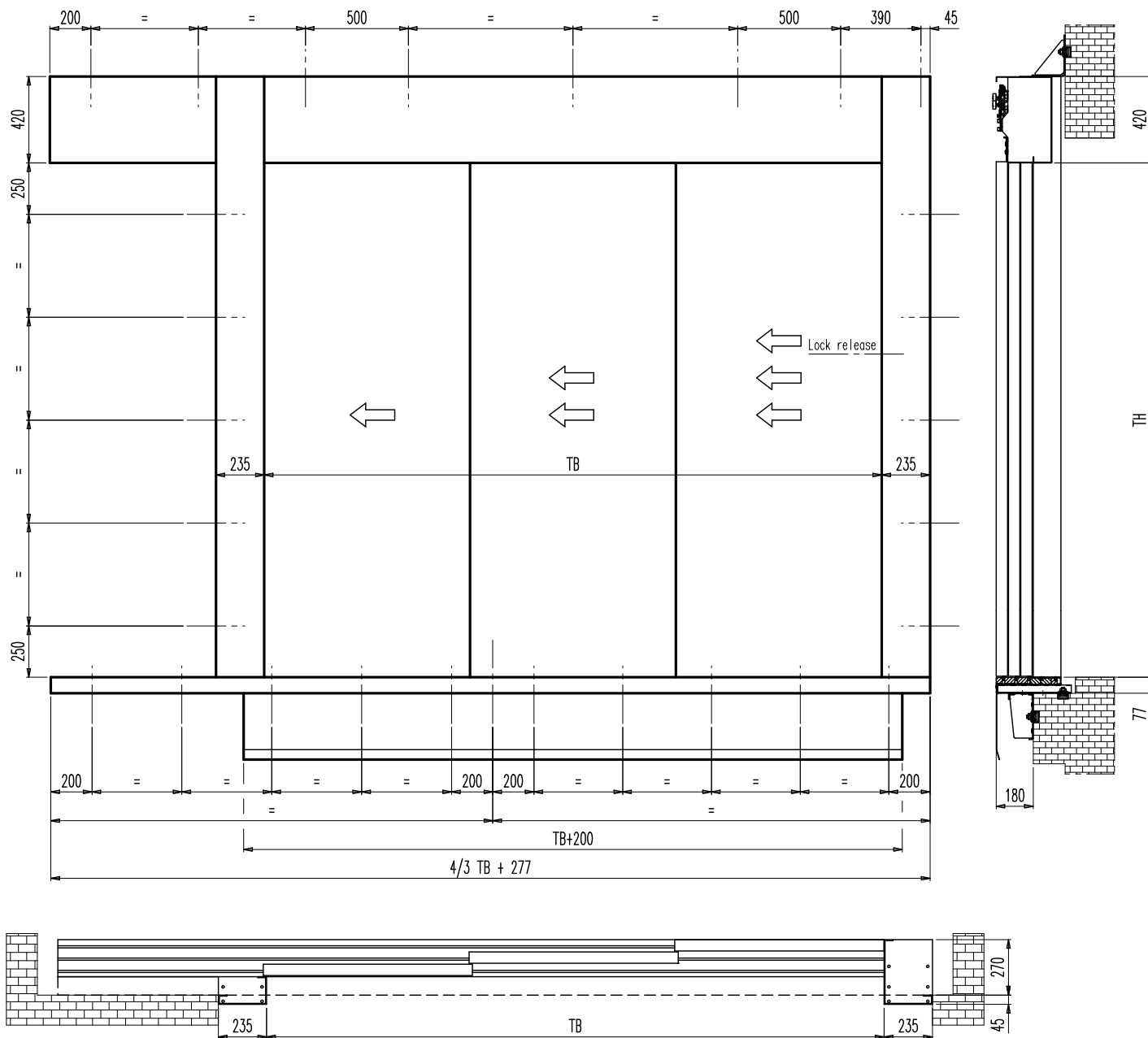




6Z execution  
shown in the picture

MAIN FEATURES	STANDARD	OPTIONS
Expansion skate	✓	Fixed arm for different TH
Motorization	See pag. 109	✗
Door controller	SDS	✗
Car fixing brackets	Heavy duty	✗
Door panels	Single skin	Double skin
Car door front	✓	✗
Impact robust packaging	Cardboard box- ISPM15	✗
Locking device	✗	EN81-1/2 (Custom - with mobile skate)
Long life guide shoes	✓	✗
Detector	✗	Dynamic
Sematic E.O.D (Emergency Opening Device)	✗	✓
Contacts cover plate	✗	IP-X3
Water-resistant contacts	✗	IP 54, IP 65, IP 67
Bottom track	Welded plates	With removable plates
Apron	✗	✓
Upper tracks	Reinforced in aluminum	✗
Landing door lock release key	✓	✗
Rollers	Increased diameters	✗

3L LAYOUT: FRONT, SIDE VIEWS AND COUPLING

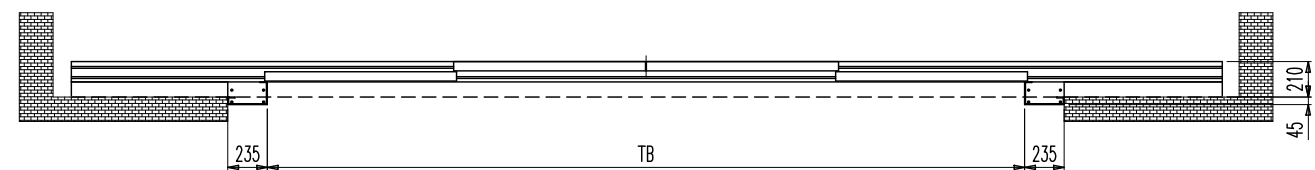
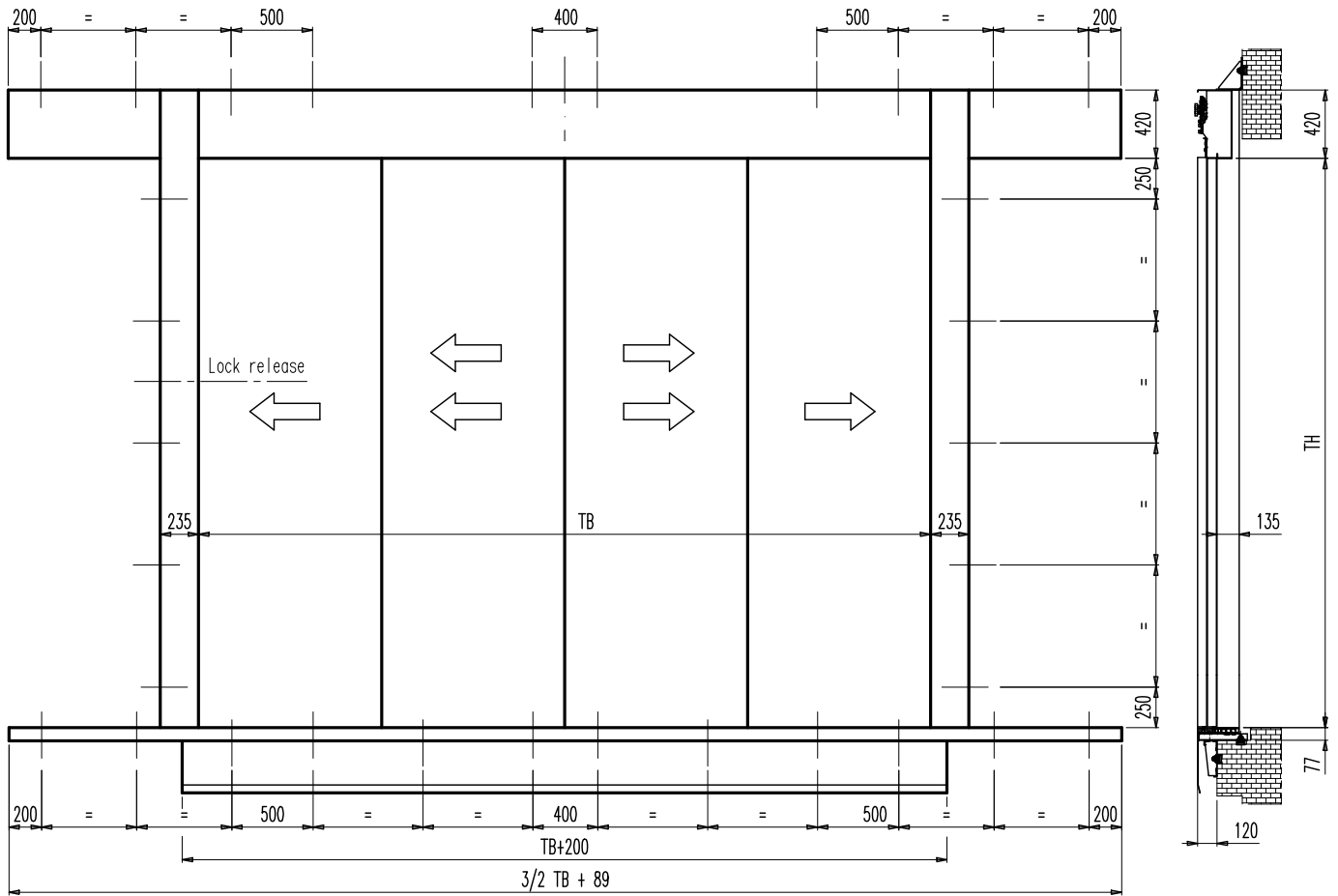


NOTES

- 3L as drawing, 3R mirrored
- Sill to sill distance 25 mm
- For further information see our technical catalogues



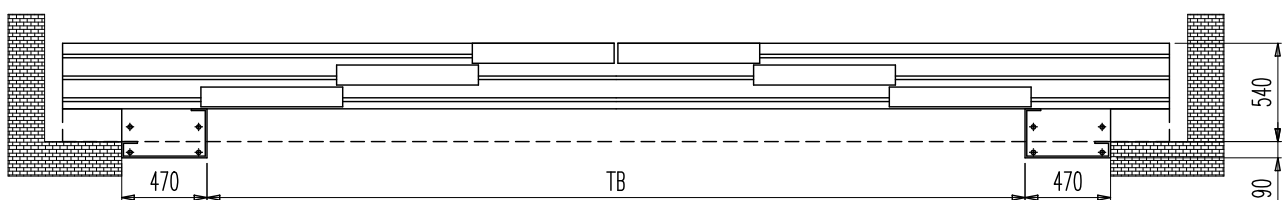
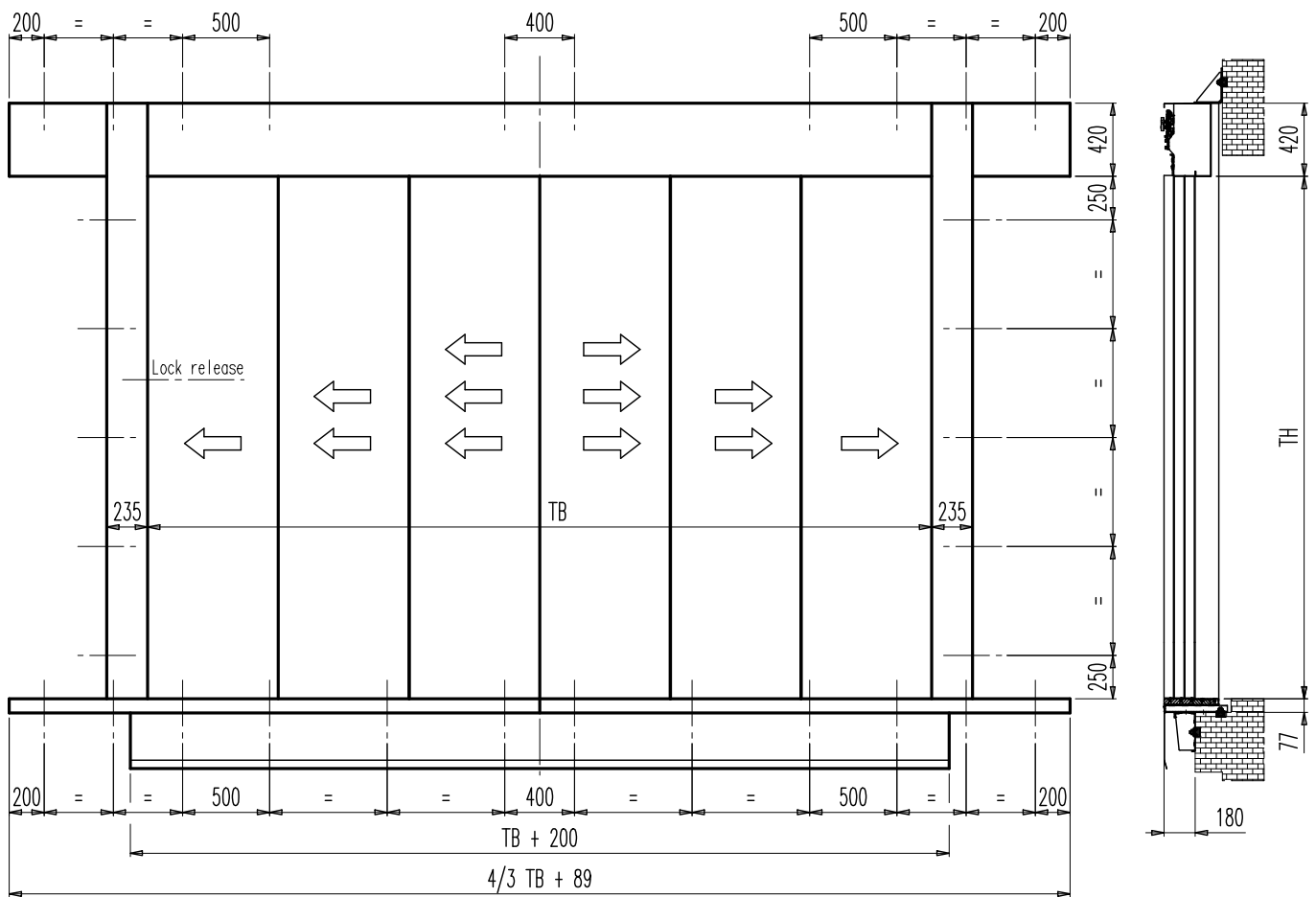
4Z LAYOUT: FRONT, SIDE VIEWS AND COUPLING



NOTES

- Sill to sill distance 25 mm
- For further information see our technical catalogues

6Z LAYOUT: FRONT, SIDE VIEWS AND COUPLING

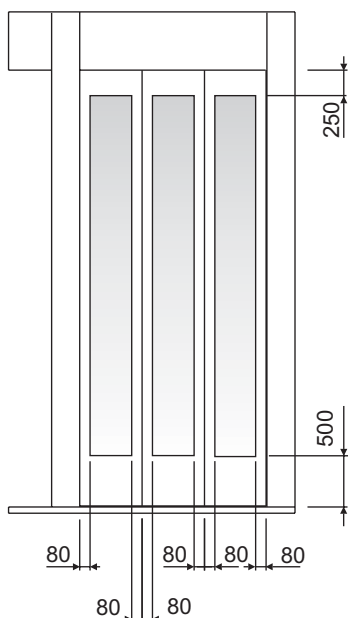


NOTES

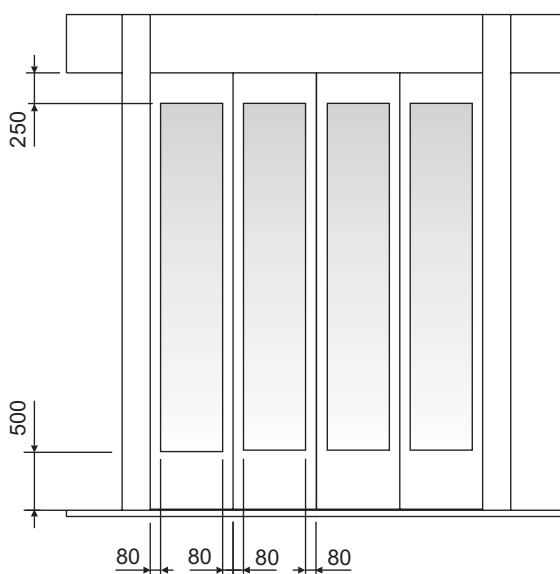
- Sill to sill distance 25 mm
- For further information see our technical catalogues

## STANDARD CONSTRUCTION WITH FRAMED GLASS PANELS

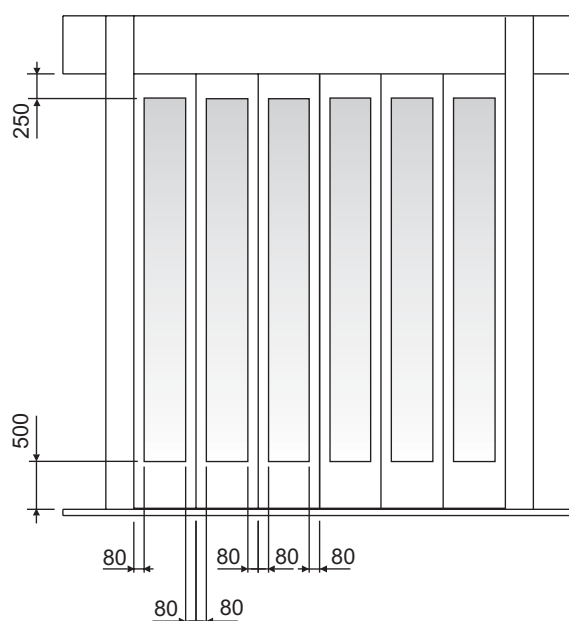
3R/L



4Z



6Z



## NOTES

- EN 81-58 and BS476 glass panels available too.
- For further information see our technical catalogues



### **Italy**

#### **Sematic Spa - Group Headquarters**

Via Zappa Comm. Francesco, 5  
24046 Osio Sotto, Bergamo  
Tel. +39 035 48 15 100 - Fax +39 035 48 15 199  
e-mail info@semaic.com

#### **Sematic Spa- Suisio Plant**

Via dei Piazzoli, 1/5  
24040 Suisio, Bergamo  
Tel. +39 035 49 36 111 - Fax. +39 035 90 24 51  
e-mail info@semaic.com

### **United Kingdom**

#### **Sematic UK Ltd**

Meadow Gate, Valley Park Est.  
Wombwell, Barnsley, South Yorkshire S73 0UN  
Tel. +44 1226 344 800 - Fax. +44 1226 344 811  
e-mail info@uk.semaic.com

### **Turkey**

#### **Sematic Asansör San.ve Tic.Ltd.Sti.**

Necip Fazıl Bulvarı Keyap Çarşı Sitesi F2 Blok No.99  
Yukarıdudullu / Ümraniye, 34775 İstanbul  
Tel. +90 216 508 1470 (PBX) - Fax +90 216 508 1473  
e-mail info@tr.semaic.com

### **Hungary**

#### **Sematic Hungária Kft**

Debreceni út 273  
4400 Nyiregyháza  
Tel. +36 42 548 410 - Fax +36 42 548 419  
e-mail info@hu.semaic.com

### **Singapore**

#### **Sematic Singapore Pte Ltd**

8 Burn Road, 1301 Trivex  
369977 Singapore  
e-mail info@sg.semaic.com

### **China**

#### **Sematic Elevator Products (Suzhou) Co., Ltd**

215121, No. 52 Weixi Road, Weiting Science Park  
Suzhou Industrial Park  
Tel. +86 512 8717 1819 - Fax +86 512 8717 1820  
e-mail info@cn.semaic.com

#### **Sematic Elevator Products (Changshu) Co.,Ltd.**

215558, No 18 Jinmen Road Changshu Southeast  
Economic Development Zone of Jiangsu  
Tel. + 86 512 8717 1819 - Fax +86 512 8717 1820  
e-mail info@cn.semaic.com

#### **Sematic (Hong Kong) Ltd**

Unit 1807, Mindas Plaza, No. 1 Tai Yau Street,  
San Po Kong, Kowloon, Hong Kong  
Tel. +852 219 47 166 - Fax +852 219 47 322  
e-mail info@hk.semaic.com

### **India**

#### **Sematic RE Elevator Products (India) Pvt. Ltd**

Madhuban, F-Wing, 1st Floor, W.E. Highway, Near Dahisar  
Telephone Exchange, Dahisar (E), Mumbai 400068  
Tel. +91 022 2897 2184 / 3184 - Fax +91 022 2897 8643  
e-mail info@in.semaic.com

### **Mexico**

#### **Sematic Elevadores Mexico S. de R.L. de C.V.**

Bldv Revolucion Mexicana n°1001 Col Barrera,  
Monclova, Coahuila 25770  
Tel. +52 (866) 648 3365 / 66 / 67 - Fax (ext 160)  
e-mail info@tyler.semaic.com

### **USA**

#### **Tyler Elevator Products Div. of Sematic USA Inc.**

7852, Bavaria Road  
Twinsburg, Ohio 44087  
Tel. +1 216 524 0100 - Fax. +1 216 524 9710  
e-mail info@tyler.semaic.com

[www.semaic.com](http://www.semaic.com)